

APP CRS <b>316°</b>	Rwy ldg <b>9487</b>
	TDZE <b>578</b>
	Apt Elev <b>599</b>

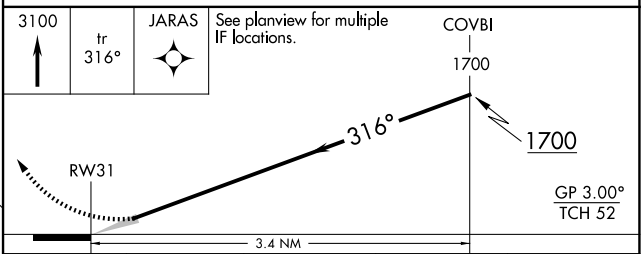
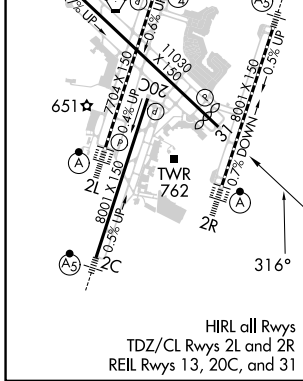
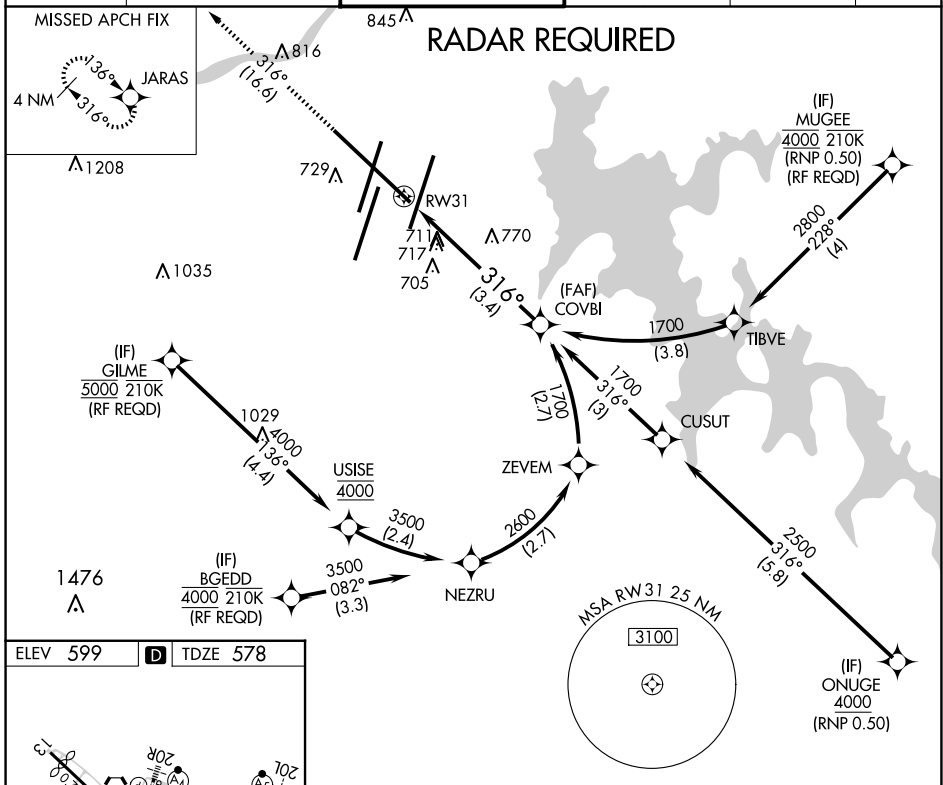
# RNAV (RNP) Z RWY 31

NASHVILLE INTL (BNA)

For uncompensated Baro-VNAV systems, procedure NA below -16°C (4°F) or above 54°C (130°F). GPS required.

MISSED APPROACH: Climb to 3100 on track 316° to JARAS and hold.

D-ATIS <b>135.1</b>	NASHVILLE APP CON <b>118.4 360.7</b>	NASHVILLE TOWER <b>118.6 257.8</b>	GND CON <b>121.9 348.6</b>	CLNC DEL <b>126.05</b>	CPDLC
------------------------	---	---------------------------------------	-------------------------------	---------------------------	-------



CATEGORY	A	B	C	D
RNP 0.25 DA		1025-1½	447 (500-1½)	
RNP 0.30 DA		1099-1¾	521 (600-1¾)	

## AUTHORIZATION REQUIRED

SE-1, 17 APR 2025 to 15 MAY 2025

SE-1, 17 APR 2025 to 15 MAY 2025