

WAAS CH 42713 W02A	APP CRS 021°	Rwy Idg TDZE Apt Elev	7702 599 599
--	------------------------	-----------------------------	---

RNAV (GPS) Y RWY 2L

NASHVILLE INTL (BNA)

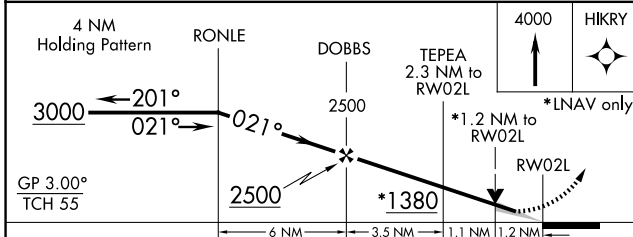
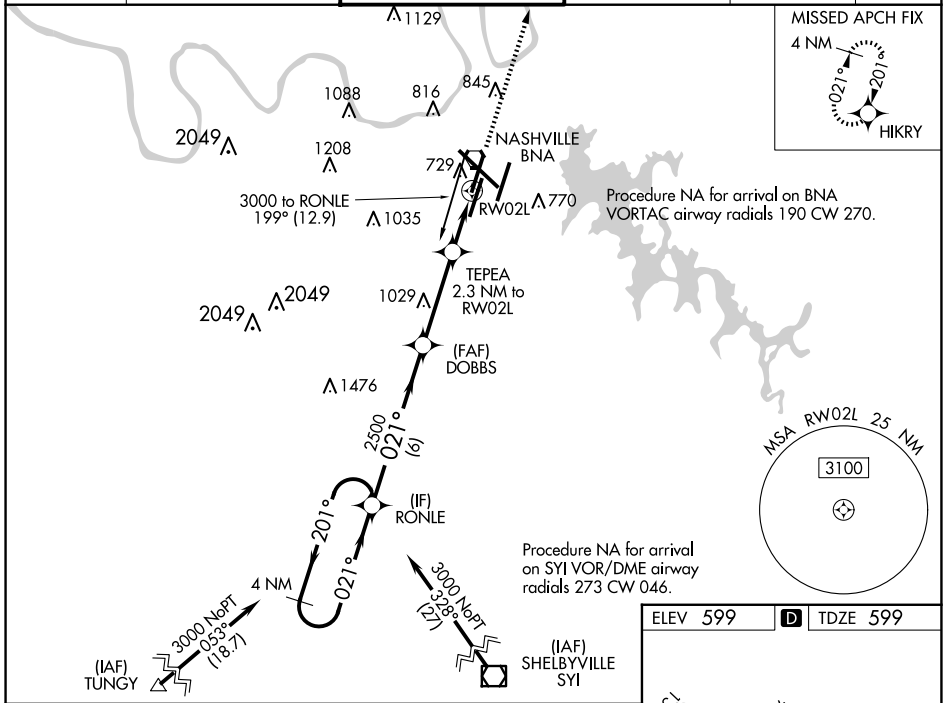
▽ For uncompensated Baro-VNAV systems, LNAV/VNAV NA below -11°C (13°F) or above 54°C (130°F). Use of FD or AP providing RNAV track guidance required during simultaneous operations. LNAV procedure NA during simultaneous operations. Simultaneous approach authorized with Rwy 2R.
▲ DME/DME RNP-0.3 NA.

ALSF-2



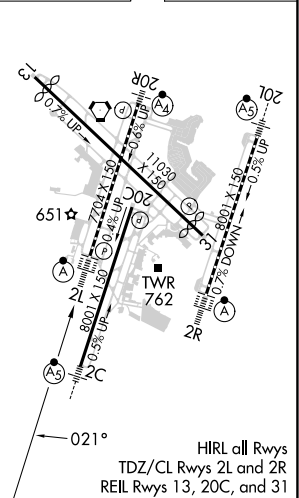
MISSED APPROACH:
Climb to 4000 direct HIKRY and hold, continue climb-in-hold to 4000.

D-ATIS 135.1	NASHVILLE APP CON 118.4 360.7	NASHVILLE TOWER 118.6 257.8	GND CON 121.9 348.6	CLNC DEL 126.05	CPDLC
------------------------	---	---------------------------------------	-------------------------------	---------------------------	-------



CATEGORY	A	B	C	D
LPV DA		799/18	200 (200-½)	
LNAV/VNAV DA		949/30	350 (400-¾)	
LNAV MDA	1020/24	421 (500-½)	1020/40	421 (500-¾)
C CIRCLING	1100-1 501 (600-1)	1120-1 521 (600-1)	1200-1¾ 601 (700-1¾)	1380-2½ 781 (800-2½)

ELEV 599 **D** TDZE 599



SE-1, 17 APR 2025 to 15 MAY 2025

SE-1, 17 APR 2025 to 15 MAY 2025