

|   |  |   |
|---|--|---|
| MIAMI DEP CON<br>125.5 354.1<br>AWOS-3<br>118.375 | <b>TOP ALTITUDE:<br/>ASSIGNED BY ATC</b> | RNAV 1 - DME/DME/IRU or GPS.<br><br>RADAR required. |
|---|--|---|

NOTE: For turbo-props/props filed at or above 13000.

TAKEOFF MINIMUMS

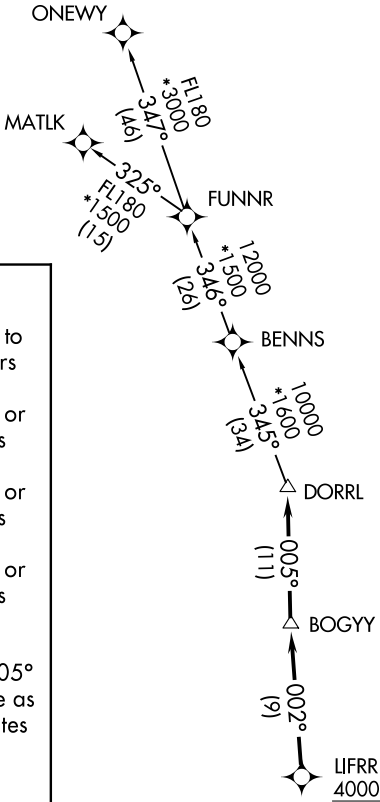
Rwy 10: Standard with minimum climb of 500'/NM to 2500.  
Rwys 18, 28: Standard with minimum climb of 500'/NM to 1900.  
Rwy 36: Standard with minimum climb of 500'/NM to 2200.

DEPARTURE ROUTE DESCRIPTION

TAKEOFF RUNWAY 10: Climb on heading 096° to 2000, or as assigned by ATC for RADAR vectors to cross LIFRR at or above 4000, thence. . . .  
TAKEOFF RUNWAY 18: Climb on heading 185° or as assigned by ATC for RADAR vectors to cross LIFRR at or above 4000, thence. . . .  
TAKEOFF RUNWAY 28: Climb on heading 276° or as assigned by ATC for RADAR vectors to cross LIFRR at or above 4000, thence. . . .  
TAKEOFF RUNWAY 36: Climb on heading 005° or as assigned by ATC for RADAR vectors to cross LIFRR at or above 4000, thence. . . .

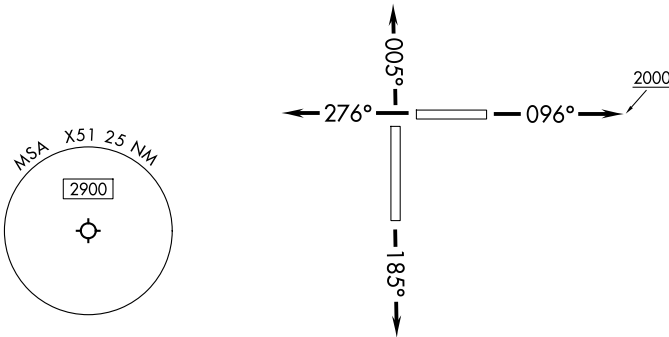
. . . .on track 002° to BOGY, then on track 005° to DORRL then on (transition), maintain altitude as assigned by ATC, expect filed altitude 10 minutes after departure.

MATLK TRANSITION (DORRL2.MATLK)  
ONEWY TRANSITION (DORRL2.ONEWY)



SE-3, 20 MAR 2025 to 17 APR 2025

SE-3, 20 MAR 2025 to 17 APR 2025



NOTE: Chart not to scale.