

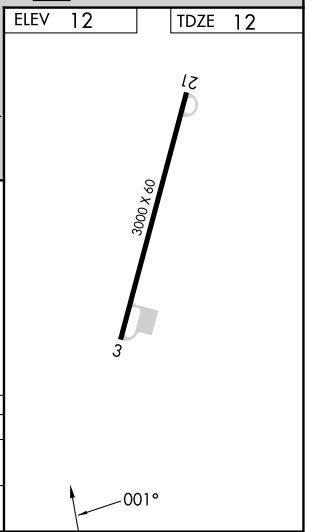
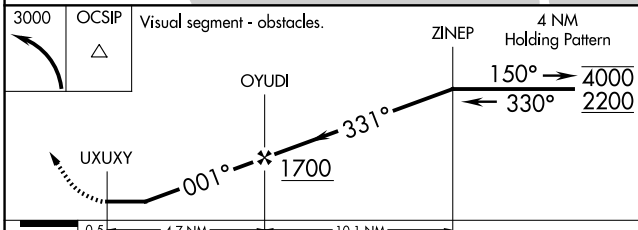
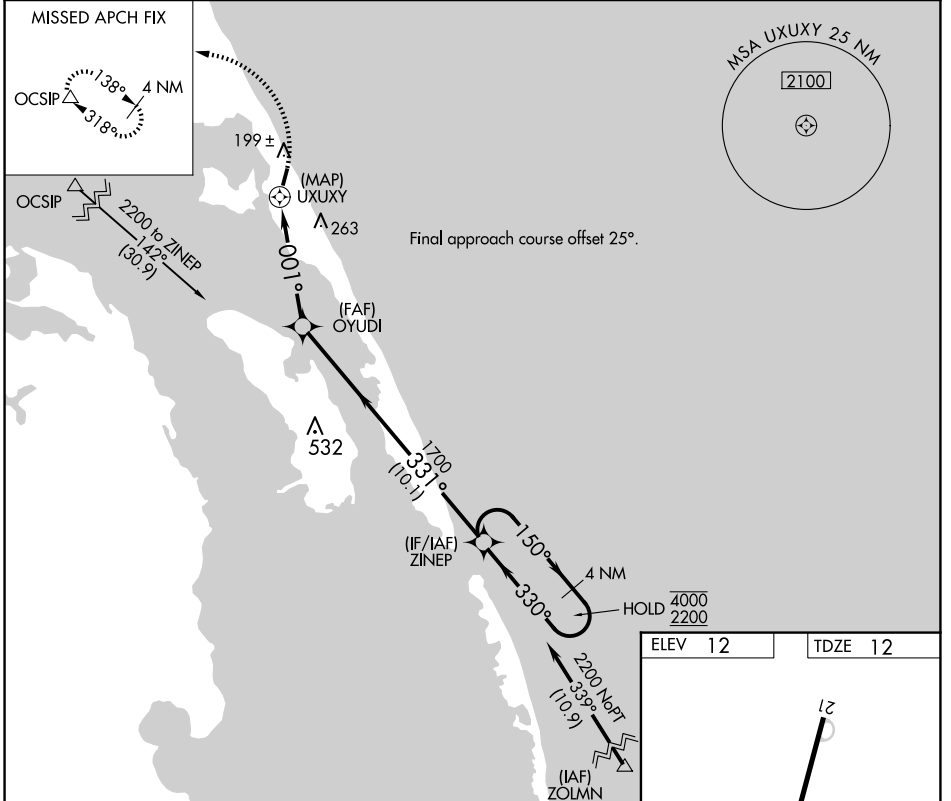
APP CRS	Rwy Idg	3000
001°	TDZE	12
	Apt Elev	12

RNAV (GPS) RWY 3

FIRST FLIGHT (F'FA)

RNP APCH - GPS.	MISSED APPROACH: Climbing left turn to 3000 direct OCSIP and hold.
▼ Procedure NA at night.	
▲ Rwy 3 helicopter visibility reduction below 1 SM NA.	

AWOS-3 118.075	CHERRY POINT APP CON 124.725 350.35	CTAF 122.9
--------------------------	---	----------------------



0.5	4.7 NM	10.1 NM	
CATEGORY	A	B	C
LNAV MDA	480-1	468 (500-1)	NA
CIRCLING	520-1 508 (600-1)	540-1 528 (600-1)	NA

SE-2, 20 MAR 2025 to 17 APR 2025

SE-2, 20 MAR 2025 to 17 APR 2025