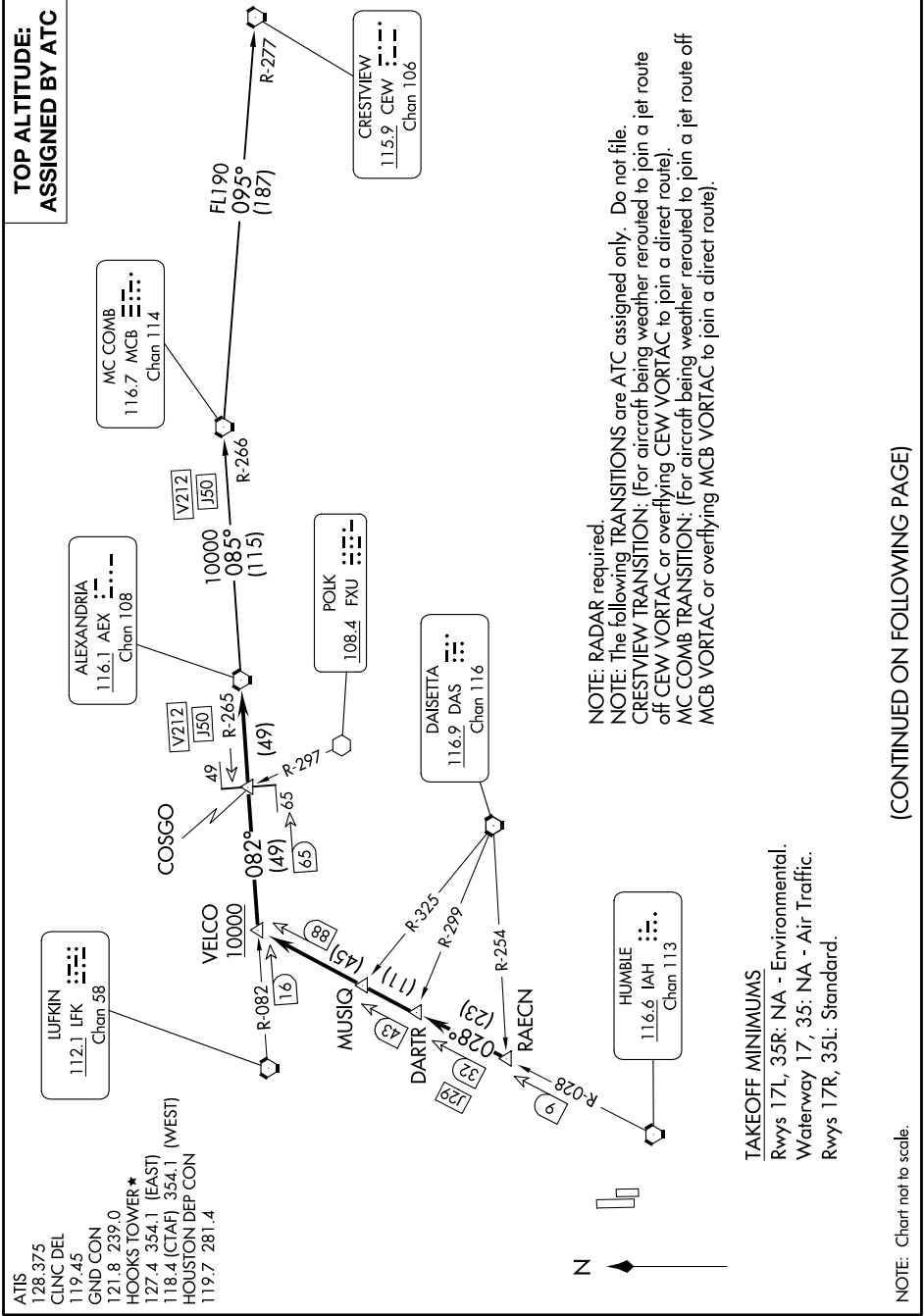


# ALEXANDRIA THREE DEPARTURE

SC-5, 20 MAR 2025 to 17 APR 2025



**TOP ALTITUDE:  
ASSIGNED BY ATC**

**NOTE: RADAR required.**  
**NOTE: The following TRANSITIONS are ATC assigned only. Do not file.**  
**CRESTVIEW TRANSITION:** (For aircraft being weather routed to join a jet route off CEW VORTAC or overflying CEW VORTAC to join a direct route).  
**MC COMB TRANSITION:** (For aircraft being weather routed to join a jet route off MCB VORTAC or overflying MCB VORTAC to join a direct route).

**TAKEOFF MINIMUMS**  
 Rwy 17L, 35R: NA - Environmental.  
 Waterway 17, 35: NA - Air Traffic.  
 Rwy 17R, 35L: Standard.

(CONTINUED ON FOLLOWING PAGE)

SC-5, 20 MAR 2025 to 17 APR 2025

# ALEXANDRIA THREE DEPARTURE

NOTE: Chart not to scale.