

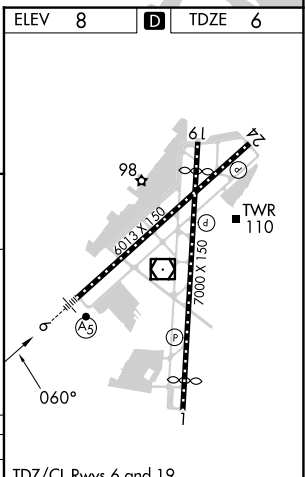
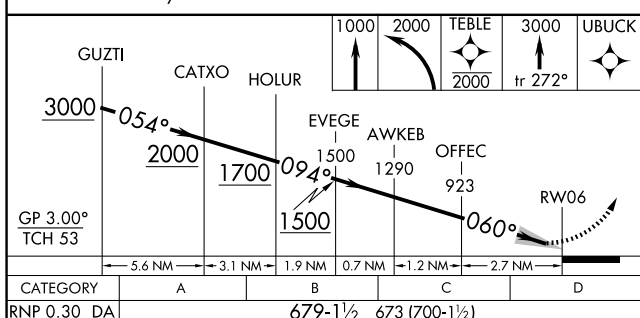
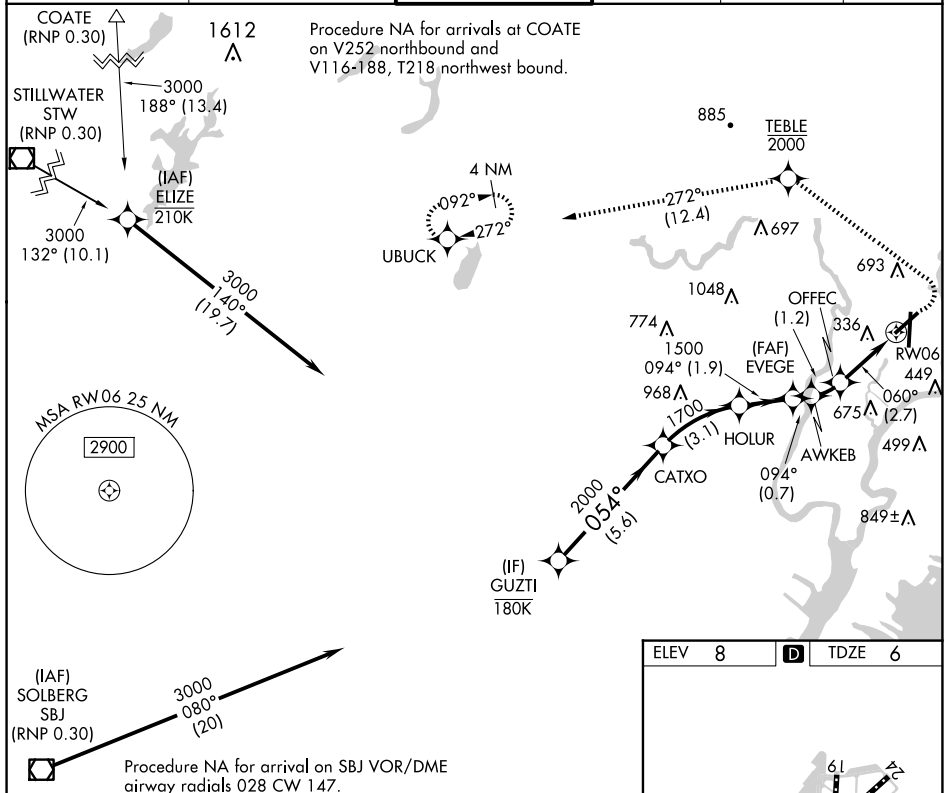
APP CRS	Rwy Idg	6013
060°	TDZE	6
	Apt Elev	8

RNAV (RNP) Z RWY 6

TETERBORO (TEB)

RNP AR APCH - GPS. RADAR required.	MALSR	MISSED APPROACH: Climb to 1000, then climbing left turn to 2000 direct TEBLE, cross TEBLE at or below 2000, then climb to 3000 on track 272° to UBUCK and hold.
▼ For uncompensated Baro-VNAV systems, procedure NA below -13°C or above 54°C. For inop ALS, increase RNP 0.30 all Cats visibility to 1½ SM.		

D-ATIS 114.2 132.85	NEWARK APP CON 127.6 379.9	TETERBORO TOWER 119.5	GND CON 121.9	CLNC DEL 128.05	CPDLC
-------------------------------	--------------------------------------	---------------------------------	-------------------------	---------------------------	-------



CATEGORY	A	B	C	D
RNP 0.30 DA		679-1½	673 (700-1½)	

AUTHORIZATION REQUIRED

TDZ/CL Rws 6 and 19
HIRL Rws 1-19 and 6-24
REIL Rws 1, 6, 19 and 24

NE-2, 20 MAR 2025 to 17 APR 2025

NE-2, 20 MAR 2025 to 17 APR 2025