

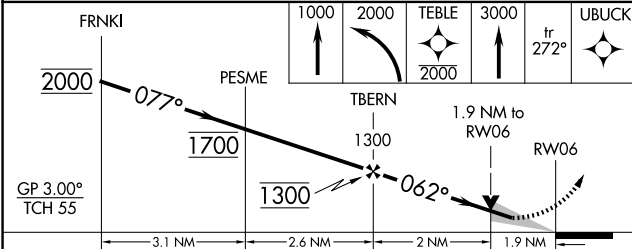
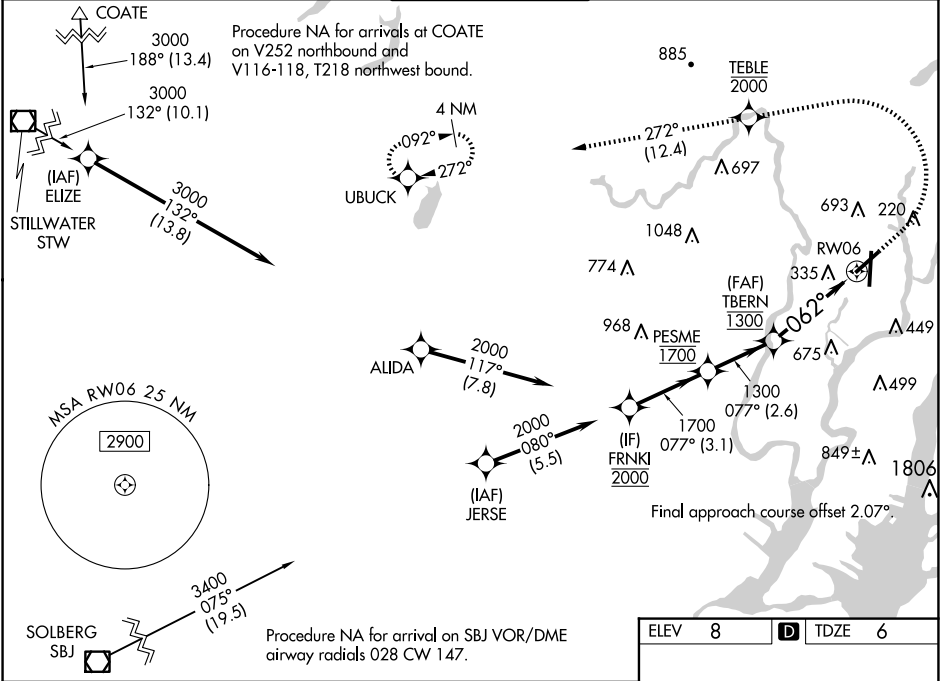
WAAS CH 65634 W06B	APP CRS 062°	Rwy Idg TDZE Apt Elev	6013 6 8
--	------------------------	-----------------------------	-------------------------------------

RNAV (GPS) X RWY 6

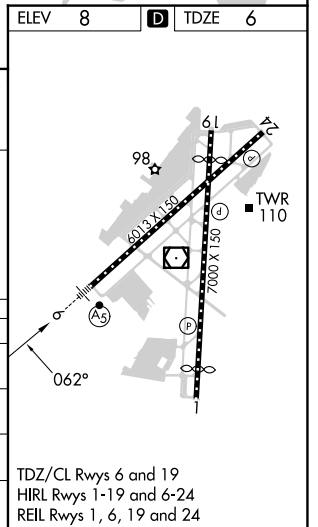
TETERBORO (TEB)

RNP APCH - GPS. RADAR required.	MALSR	MISSED APPROACH: Climb to 1000, then climbing left turn to 2000 direct TEBLE, cross TEBLE at or below 2000, then climb to 3000 on track 272° to UBUCK and hold.
<p>▼ Circling NA for Cats B, C and D northwest of Rwy 6 and 19. For uncompensated Baro-VNAV systems, LNAV/VNAV NA below -13°C or above 54°C. For inop ALS, increase LPV all Cats visibility to 1$\frac{1}{8}$ SM, and LNAV/VNAV all Cats visibility to 1$\frac{1}{8}$ SM.</p>		

D-ATIS 114.2 132.85	NEWARK APP CON 127.6 379.9	TETERBORO TOWER 119.5	GND CON 121.9	CLNC DEL 128.05	CPDLC
-------------------------------	--------------------------------------	---------------------------------	-------------------------	---------------------------	-------



GP 3.00° TCH 55	3.1 NM	2.6 NM	2 NM	1.9 NM
CATEGORY	A	B	C	D
LPV DA	459/45		453 (500- $\frac{7}{8}$)	
LNAV/VNAV DA	672-1 $\frac{1}{2}$		666 (700-1 $\frac{1}{2}$)	
LNAV MDA	660/24 654 (700- $\frac{1}{2}$)		660-1 $\frac{3}{8}$ 654 (700-1 $\frac{3}{8}$)	
CIRCLING	760-1 752 (800-1)		820-2 $\frac{1}{2}$ 812 (900-2 $\frac{1}{2}$) 1040-3 1032 (1100-3)	



NE-2, 20 MAR 2025 to 17 APR 2025

NE-2, 20 MAR 2025 to 17 APR 2025

TDZ/CL Rwy 6 and 19
HIRL Rwy 1-19 and 6-24
REIL Rwy 1, 6, 19 and 24