


LOC/DME I-TEB	APP CRS	Rwy Idg	<b>6013</b>
<b>111.75</b>	<b>060°</b>	TDZE	<b>6</b>
Chan <b>54 (Y)</b>		Apt Elev	<b>8</b>

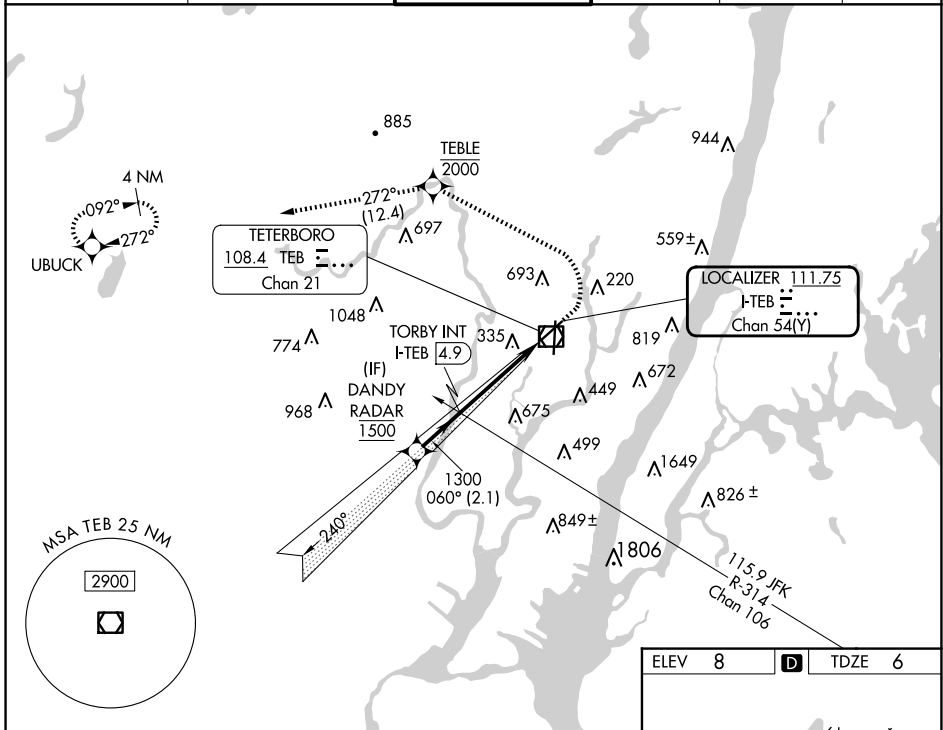
# COPTER ILS Y or LOC Y RWY 6

TETERBORO (TEB)

RNP APCH - GPS.  
 RADAR required.  
 ▼  
 ▲NA

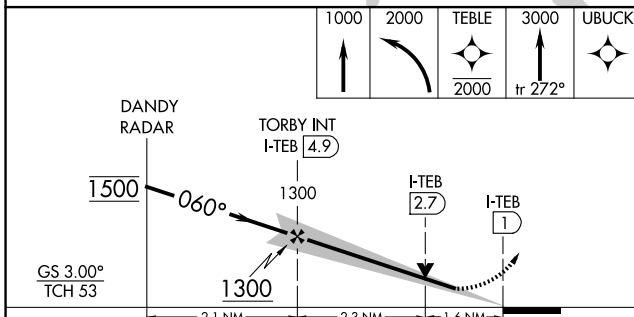
MALSRL  
  
 MISSED APPROACH: Climb to 1000, then climbing left turn to 2000 direct TEBLE, cross TEBLE at or below 2000, then climb to 3000 on track 272° to UBUCK and hold.

D-ATIS	NEWARK APP CON	TETERBORO TOWER	GND CON	CLNC DEL	CPDLC
<b>114.2 132.85</b>	<b>127.6 379.9</b>	<b>119.5</b>	<b>121.9</b>	<b>128.05</b>	

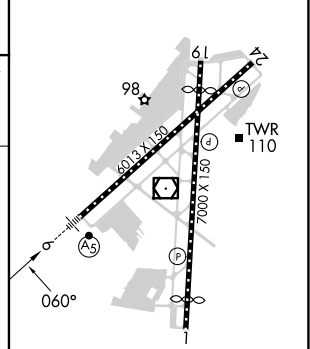


NE-2, 20 MAR 2025 to 17 APR 2025

NE-2, 20 MAR 2025 to 17 APR 2025



ELEV 8	D	TDZE 6
--------	---	--------



CATEGORY	COPTER	
H-ILS 6	206/12	200 (200-¼)
H-LOC 6	580/24	574 (600-½)

TDZ/CL Rws 6 and 19					
REIL Rws 1, 6, 19 and 24					
HIRL Rws 1-19 and 6-24					
FAF to MAP 3.9 NM					
Knots	45	60	75	90	105
Min:Sec	5:12	3:54	3:07	2:36	2:14