

25051

AIRPORT DIAGRAM

AL-890 (FAA)

TETERBORO (TEB)
TETERBORO, NEW JERSEY

D-ATIS
114.2 132.85
TETERBORO TOWER
119.5
GND CON
121.9
CLNC DEL
128.05
RAMP CON
120.675
CPDLC
PDC
D

74°04.0'W

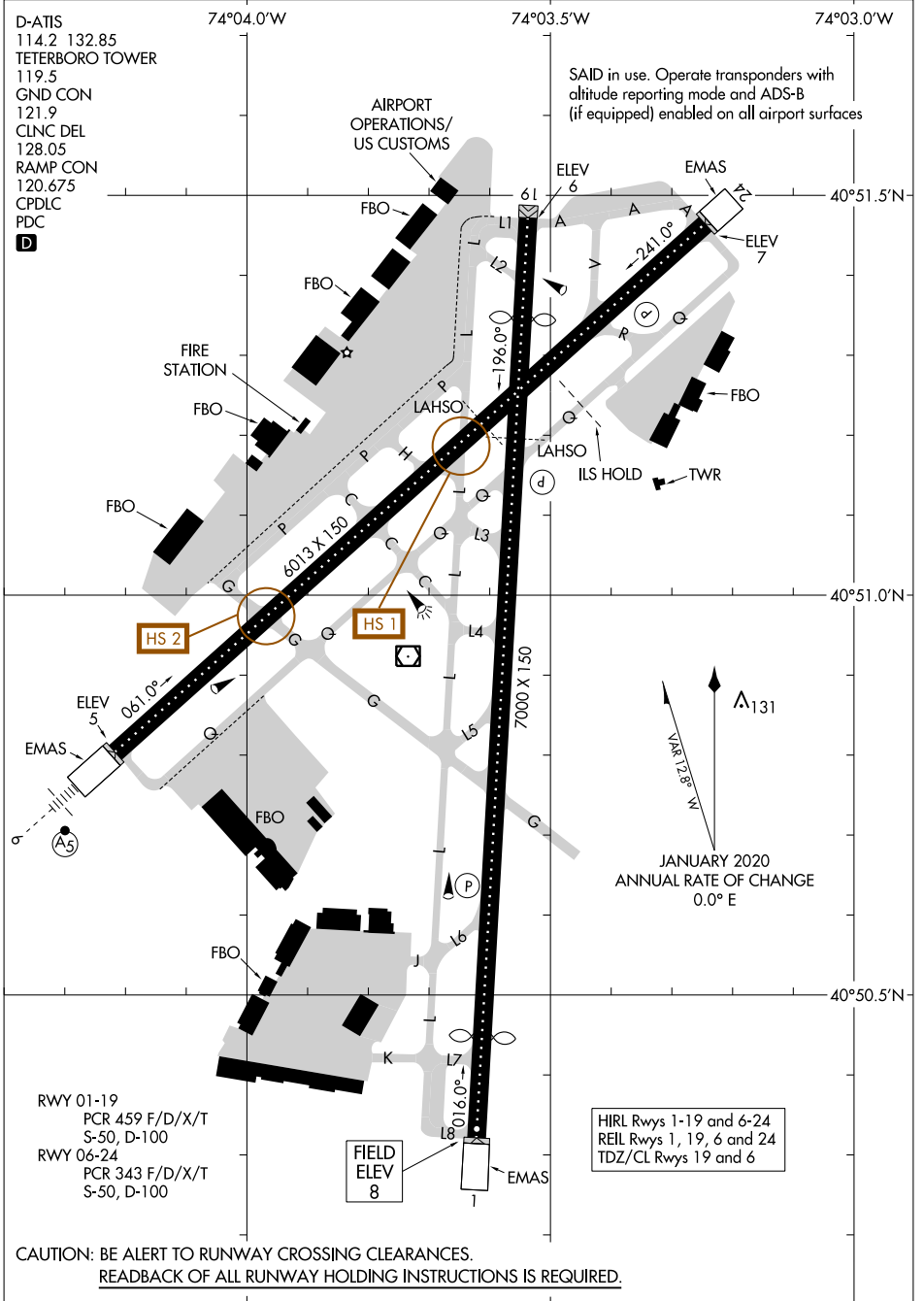
74°03.5'W

74°03.0'W

SAID in use. Operate transponders with altitude reporting mode and ADS-B (if equipped) enabled on all airport surfaces

NE-2, 20 MAR 2025 to 17 APR 2025

NE-2, 20 MAR 2025 to 17 APR 2025



HS 2

HS 1

▲
A₁₃₁

JANUARY 2020
ANNUAL RATE OF CHANGE
0.0° E

RWY 01-19
PCR 459 F/D/X/T
S-50, D-100
RWY 06-24
PCR 343 F/D/X/T
S-50, D-100

FIELD
ELEV
8

HIRL Rwy 1-19 and 6-24
REL Rwy 1, 19, 6 and 24
TDZ/CL Rwy 19 and 6

CAUTION: BE ALERT TO RUNWAY CROSSING CLEARANCES.
READBACK OF ALL RUNWAY HOLDING INSTRUCTIONS IS REQUIRED.

AIRPORT DIAGRAM

25051

TETERBORO, NEW JERSEY
TETERBORO (TEB)