

WAAS CH 69434 W18A	APP CRS 177°	Rwy Idg TDZE Apt Elev	4001 793 793
--	------------------------	-----------------------------	---

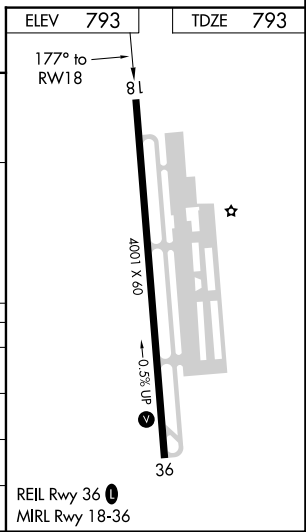
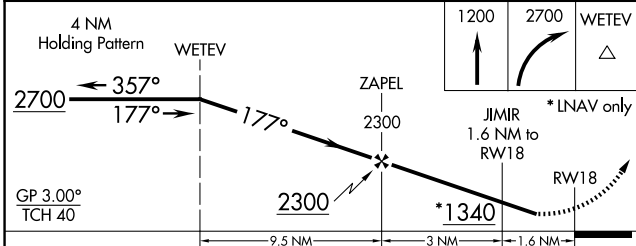
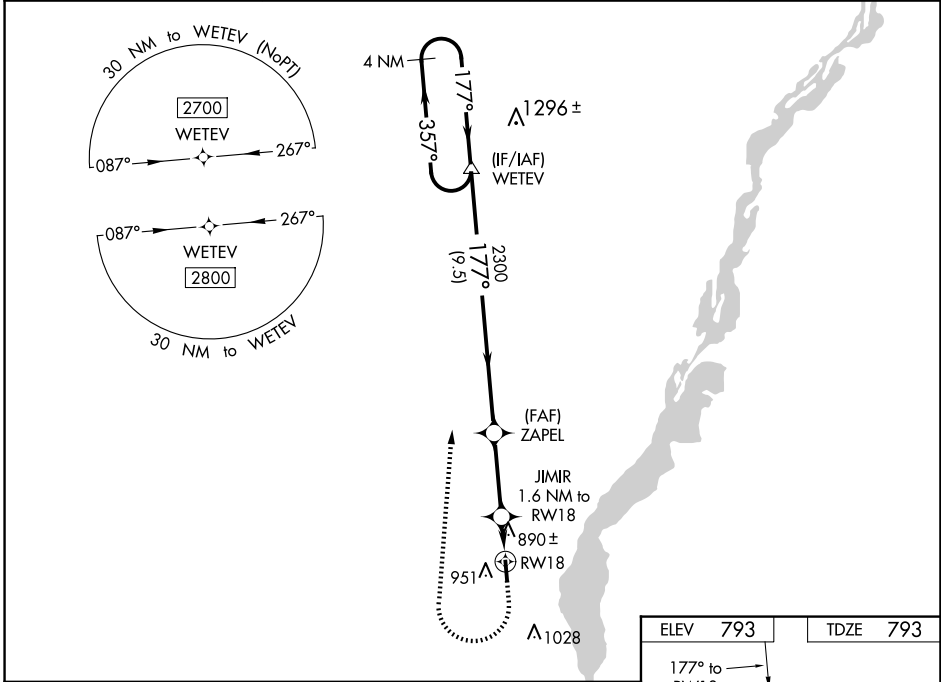
RNAV (GPS) RWY 18

MOUNT HAWLEY AUXILIARY (3MY)

▼ Circling to Rwy 36 NA at night. DME/DME RNP-0.3 NA. Baro-VNAV NA.
▲ NA Use General Downning-Peoria Intl altimeter setting, when not received, use Lacon altimeter setting: increase LPV DA to 1112 feet and all visibilities 1/8 mile, increase LNAV/VNAV DA to 1228 feet and all visibilities 1/8 mile; increase all MDAs 40 feet and visibility Cat C 1/8 SM. Rwy 18 helicopter visibility reduction below 1 SM NA.

MISSED APPROACH: Climb to 1200 then climbing right turn to 2700 direct WETEVE and hold.

PIA ASOS 126.1 282.2	SAINT LOUIS APP CON 125.8 269.2	CLINC DEL 121.6	UNICOM 122.7 (CTAF) 0
--------------------------------	---	---------------------------	---------------------------------



CATEGORY	A	B	C	D
LPV DA	1082-1¼	289 (300-1¼)		NA
LNAV/VNAV DA	1198-1⅜	405 (500-1⅜)		NA
LNAV MDA	1180-1	387 (400-1)	1180-1⅛ 387 (400-1⅛)	NA
C CIRCLING	1360-1	567 (600-1)	1420-1¾ 627 (700-1¾)	NA

EC-3, 20 MAR 2025 to 17 APR 2025

EC-3, 20 MAR 2025 to 17 APR 2025