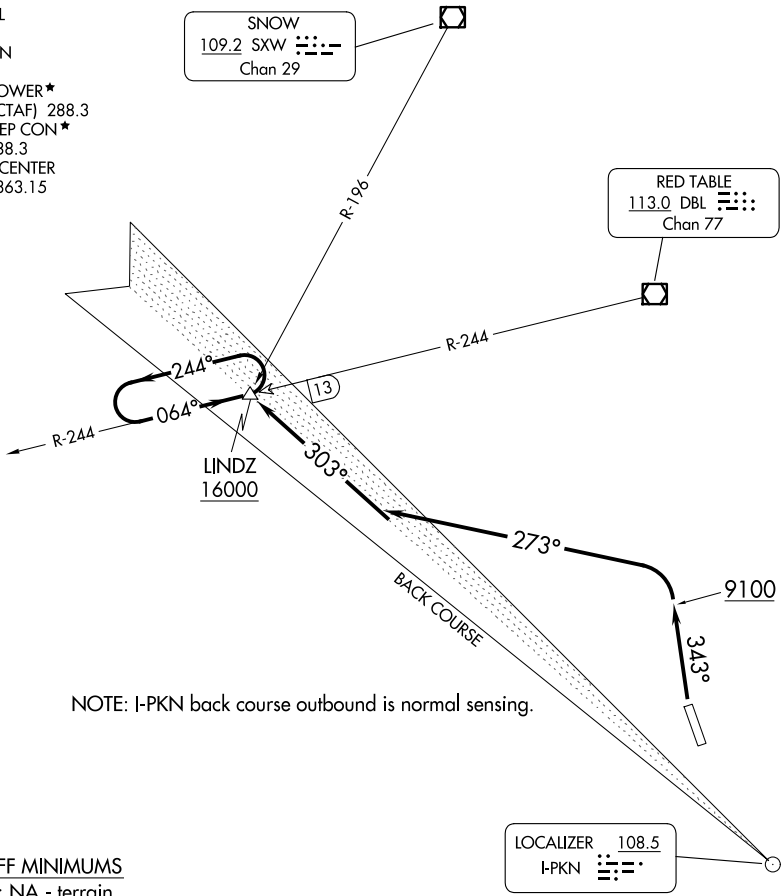


(SARDD3.LINDZ) 24081

SARDD THREE DEPARTURE (OBSTACLE)

ASPEN-PITKIN COUNTY/SARDY FLD (A5E)
AL-5889 (FAA) ASPEN, COLORADO

ATIS
 120.4
 CLNC DEL
 123.75
 GND CON
 121.9
 ASPEN TOWER★
 118.85 (CTAF) 288.3
 ASPEN DEP CON★
 123.8 288.3
 DENVER CENTER
 119.85 363.15
 UNICOM
 122.95



NOTE: I-PKN back course outbound is normal sensing.

TAKEOFF MINIMUMS

Rwy 15: NA - terrain.
 Rwy 33: 400-1 with minimum climb of 460' per NM to 14000.

TAKEOFF OBSTACLE NOTES

Rwy 33: Multiple trees beginning 35' from DER, 386' right of centerline, up to 100' AGL/7722' MSL.
 Multiple trees, bushes and terrain beginning 4' from DER, 400' left of centerline, up to 100' AGL/7821' MSL. Multiple trees, bushes, and terrain beginning 3484' from DER, 752' left of centerline, up to 100' AGL/8179' MSL.

NOTE: Chart not to scale.

DEPARTURE ROUTE DESCRIPTION

TAKEOFF RUNWAY 33: Climb on heading 343° to 9100, then climbing left turn to 16000 on heading 273° to intercept I-PKN NW course outbound to LINDZ INT/DBL 13 DME. Climb in LINDZ holding pattern to cross LINDZ at or above 16000 before proceeding on course.

SARDD THREE DEPARTURE (OBSTACLE)

(SARDD3.LINDZ) 27JUN13

ASPEN, COLORADO
ASPEN-PITKIN COUNTY/SARDY FLD (A5E)

SW-1, 20 FEB 2025 to 20 MAR 2025

SW-1, 20 FEB 2025 to 20 MAR 2025