

LOC/DME I-ASE 111.15 Chan 48(Y)	APP CRS 151°	Rwy Idg TDZE Apt Elev N/A N/A 7838
---	------------------------	---

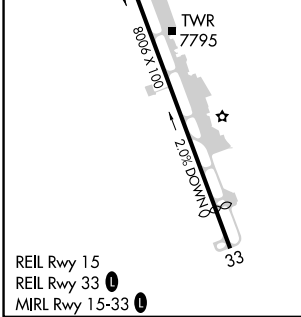
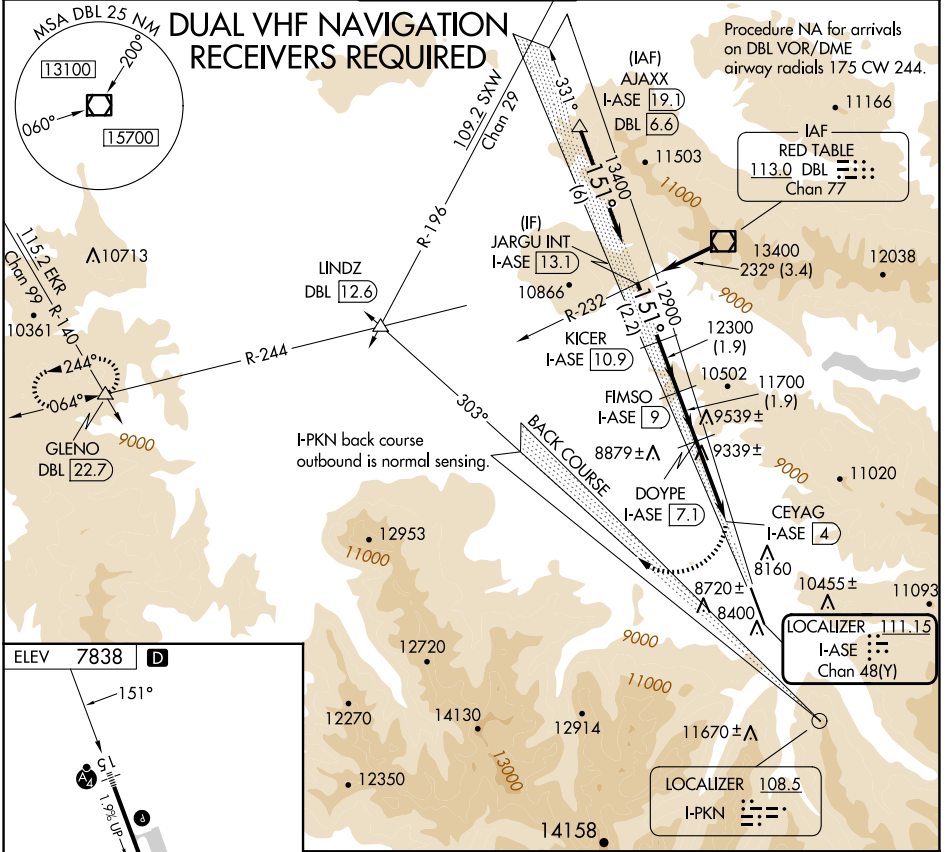
LOC/DME-E

ASPEN-PITKIN COUNTY/SARDY FLD (ASE)

NA Procedure NA at night.
Circling NA for Cat C southwest of Rwy 15-33.

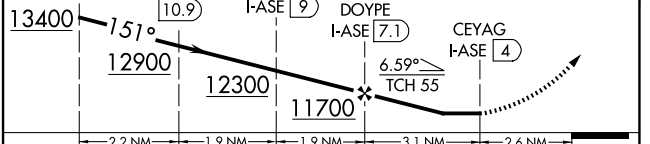
MISSED APPROACH: Climbing right turn to 14000 on heading 300° and on I-PKN localizer NW course (303°) to LINDZ INT/DBL 12.6 DME and on DBL VOR/DME R-244 to GLENO INT/DBL 22.7 DME and hold.

ATIS 120.4	ASPEN APP CON * 123.8 288.3	ASPEN TOWER * 118.85 (CTAF) 0 288.3	GND CON 121.9	CLNC DEL 123.75	UNICOM 122.95
----------------------	---------------------------------------	---	-------------------------	---------------------------	-------------------------



VGSI and descent angles not coincident (VGSI Angle 3.50/TCH 55).

JARGU INT I-ASE [13.1]	KICER I-ASE [10.9]	FIMSO I-ASE [9]	DOYPE I-ASE [7.1]	CEYAG I-ASE [4]	LINDZ R-244	DBL R-244	GLENO
---------------------------	-----------------------	--------------------	----------------------	--------------------	----------------	--------------	-------



CATEGORY	A	B	C	D
CIRCLING	9840-3 2002 (2100-3)	10220-3 2382 (2400-3)	10960-3 3122 (3200-3)	NA

SW-1, 20 FEB 2025 to 20 MAR 2025

SW-1, 20 FEB 2025 to 20 MAR 2025