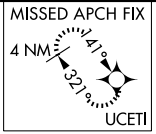
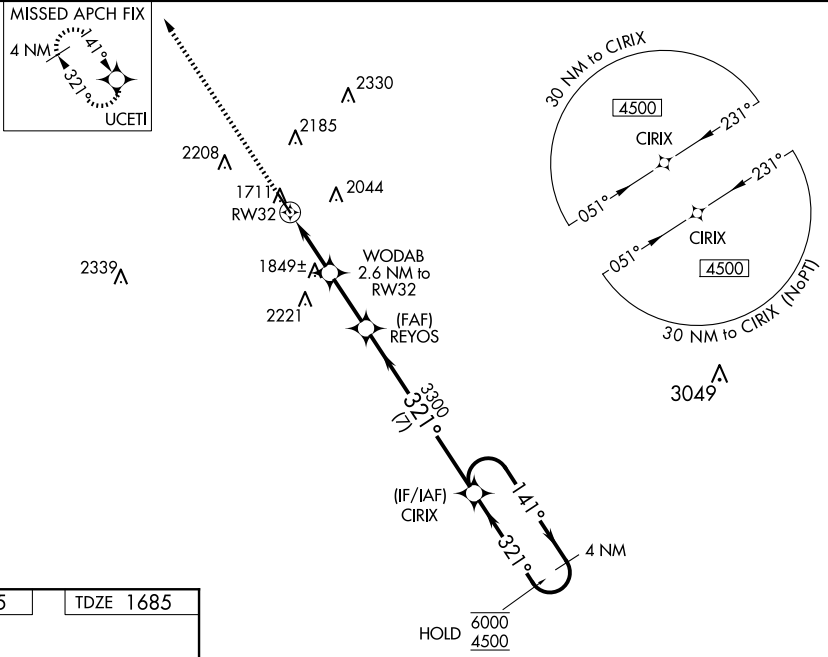


WAAS CH 81930 W32A	APP CRS 321°	Rwy Idg TDZE Apt Elev	5001 1685 1695
--	------------------------	-----------------------------	---

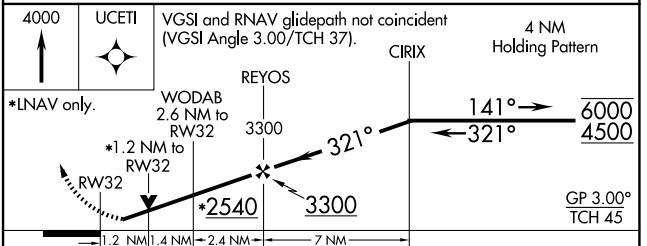
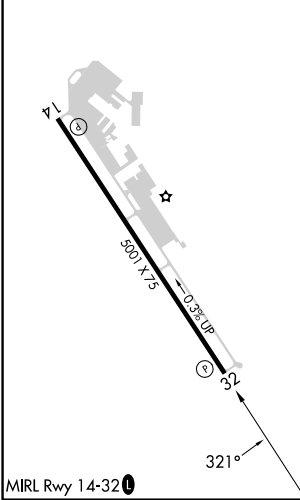
RNAV (GPS) RWY 32

GILLESPIE COUNTY (T82)

RNP APCH.		MISSED APPROACH: Climb to 4000 direct UCETI and hold.	
AWOS-3 120.0	HOUSTON CENTER 134.2 307.3	GCO 121.725	UNICOM 122.7 (CTAF) 0



ELEV 1695	TDZE 1685
-----------	-----------



CATEGORY	A	B	C	D
LPV DA	1935-1	250 (300-1)		NA
LNAV/VNAV DA	1967-1	282 (300-1)		NA
LNAV MDA	2100-1	415 (500-1)	2100-1¼ 415 (500-1¼)	NA
CIRCLING	2200-1 505 (600-1)	2480-1 785 (800-1)	2520-2½ 825 (900-2½)	NA

SC-3, 20 FEB 2025 to 20 MAR 2025

SC-3, 20 FEB 2025 to 20 MAR 2025