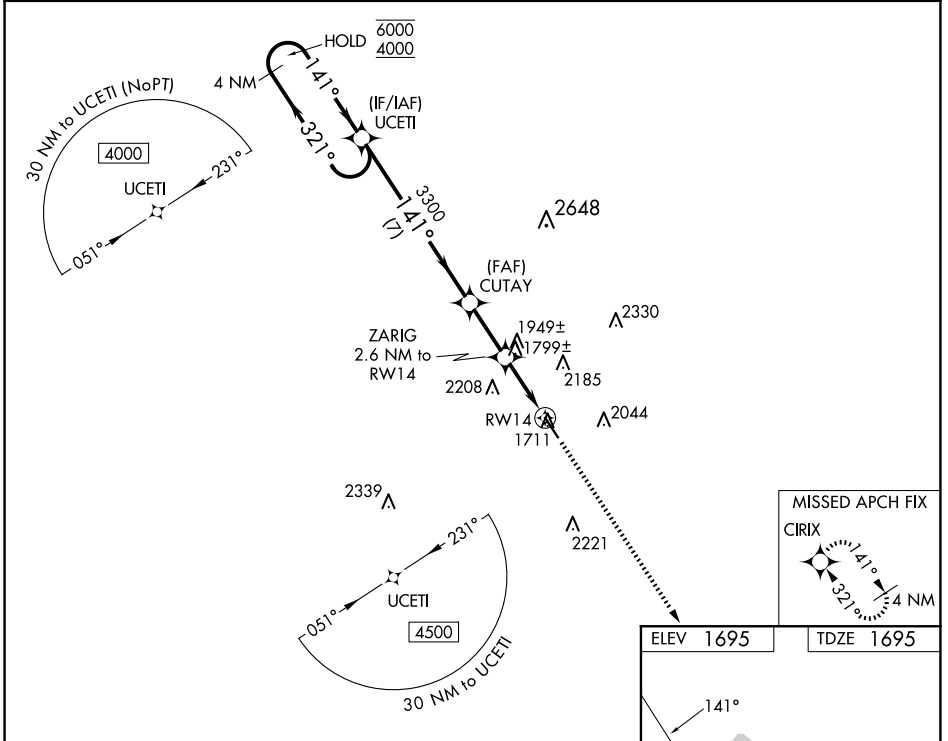


WAAS CH <b>78030</b> <b>W14A</b>	APP CRS <b>141°</b>	Rwy Idg TDZE Apt Elev	<b>5001</b> <b>1695</b> <b>1695</b>
--	------------------------	-----------------------------	---

# RNAV (GPS) RWY 14

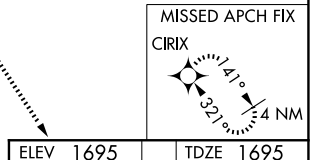
GILLESPIE COUNTY (T82)

RNP APCH.		MISSED APPROACH: Climb to 4500 direct CIRIX and hold.	
AWOS-3 <b>120.0</b>	HOUSTON CENTER <b>134.2 307.3</b>	GCO <b>121.725</b>	UNICOM <b>122.7 (CTAF) 0</b>

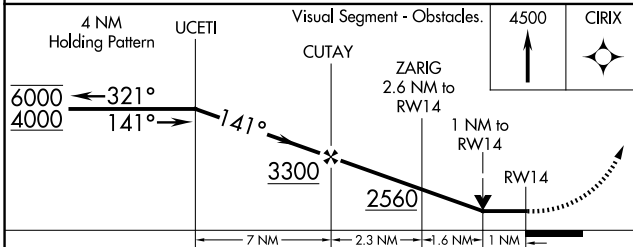


SC-3, 20 FEB 2025 to 20 MAR 2025

SC-3, 20 FEB 2025 to 20 MAR 2025



ELEV 1695	TDZE 1695
-----------	-----------



CATEGORY	A	B	C	D
LP MDA	2060-1 365 (400-1)			NA
LNAV MDA	2200-1	505 (600-1)	2200-1 <sup>3</sup> / <sub>8</sub> 505 (600-1 <sup>3</sup> / <sub>8</sub> )	NA
CIRCLING	2200-1 505 (600-1)	2480-1 785 (800-1)	2520-2 <sup>1</sup> / <sub>2</sub> 825 (900-2 <sup>1</sup> / <sub>2</sub> )	NA

