


VOR/DME MCW <b>114.9</b> Chan <b>96</b>	APP CRS <b>356°</b>	Rwy Idg <b>6401</b> TDZE <b>1193</b> Apt Elev <b>1213</b>
---	------------------------	---

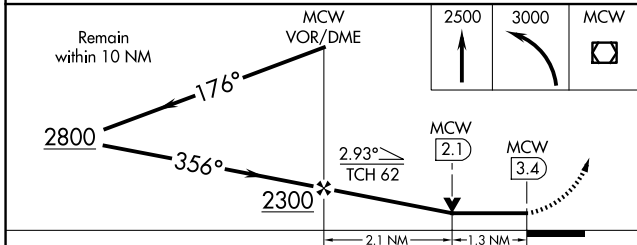
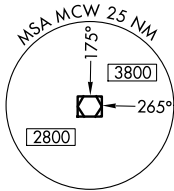
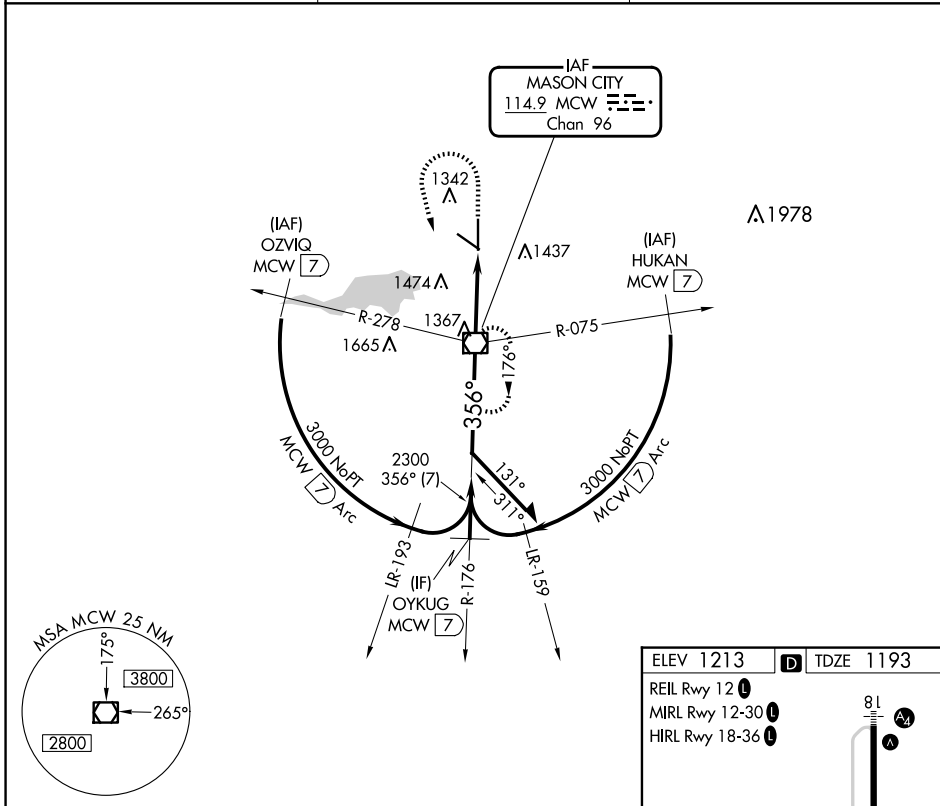
# VOR RWY 36

MASON CITY MUNI (MCW)

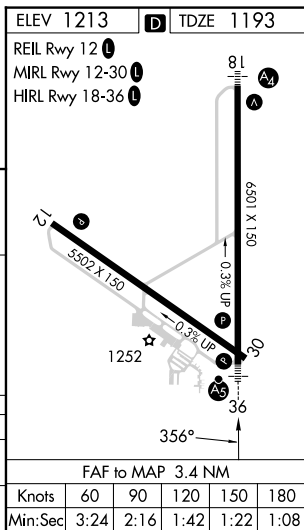
**V** VDP NA when using Charles City altimeter setting. When local altimeter setting not received, use Charles City altimeter setting and increase all MDA 100 feet and increase S-36 Cat C/D and Circling Cat C visibility 1/4 mile.

**A** MALSR  MISSED APPROACH: Climb to 2500 then climbing left turn to 3000 direct MCW VOR/DME and hold.

ASOS <b>120.3</b>	MINNEAPOLIS CENTER <b>127.3 257.675</b>	UNICOM <b>123.0</b> (CTAF) <b>1</b>
----------------------	--	--



CATEGORY	A	B	C	D
S-36	1640-3/4 467 (500-1)	447 (500-3/4)	1640-7/8 567 (600-1/2)	447 (500-7/8)
CIRCLING	1680-1 467 (500-1)	1760-1 547 (600-1)	1780-1 1/2 567 (600-1/2)	1780-2 567 (600-2)



NC-3, 20 FEB 2025 to 20 MAR 2025

NC-3, 20 FEB 2025 to 20 MAR 2025