

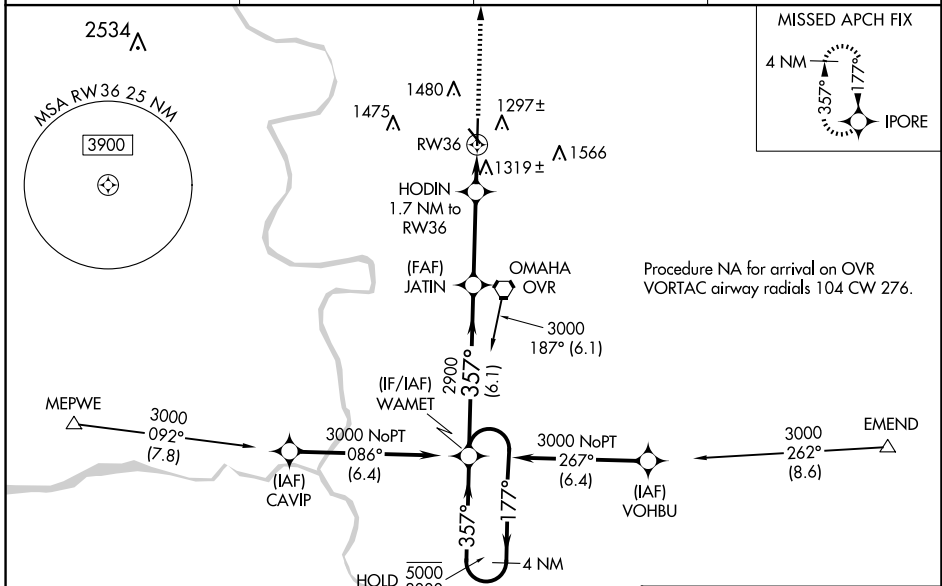
WAAS CH 53606 W36A	APP CRS 357°	Rwy Idg TDZE Apt Elev	5500 1245 1245
---------------------------------	------------------------	-----------------------------	---

RNAV (GPS) RWY 36

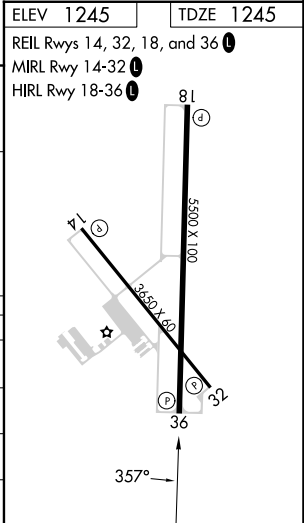
COUNCIL BLUFFS MUNI (CBF)

RNP APCH.	<p>MISSED APPROACH: Climb to 3000 direct IPORE and hold.</p>
<p>Baro-VNAV and VDP NA when using Eppley Airfield altimeter setting. For uncompensated Baro-VNAV systems, LNAV/VNAV NA below -17°C or above 54°C. When local altimeter setting not received, use Eppley Airfield altimeter setting and increase LPV DA to 1498 feet, LNAV/VNAV DA to 1548 feet, and all MDA 60 feet and increase LNAV/VNAV all Cats visibility 1/2 SM, LNAV Cat C and D visibility 1/4 SM, and Circling Cat C and D visibility 1/4 SM.</p>	

AWOS-3 126.575	OMAHA APP CON 124.5 263.0	CLNC DEL 127.675	UNICOM 122.725 (CTAF)
--------------------------	-------------------------------------	----------------------------	---------------------------------



4 NM Holding Pattern 5000 ← 177° 3000 → 357° GP 3.00° TCH 50	WAMET	JATIN	HODIN	IPORE
	4 NM 3000 NoPT 086° (6.4) (IF/IAF) WAMET 2900 357° (6.1) 3000 187° (6.1) 3000 NoPT 267° (6.4) HOLD 5000/3000 4 NM 357° 177°	2900 *1820	1.7 NM to RW36 *0.9 NM to RW36 *NAV only	3000 IPORE
CATEGORY	A	B	C	D
LPV DA		1445-3/4	200 (200-3/4)	
LNAV/VNAV DA		1495-3/4	250 (300-3/4)	
LNAV MDA		1580-1	335 (400-1)	
C CIRCLING	1780-1 535 (600-1)	1840-1 595 (600-1)	1840-1 1/2 595 (600-1 1/2)	1880-2 635 (700-2)



NC-3, 20 FEB 2025 to 20 MAR 2025

NC-3, 20 FEB 2025 to 20 MAR 2025