

WAAS CH 45841 W14A	APP CRS 136°	Rwy Idg TDZE Apt Elev	3650 1245 1245
--	------------------------	-----------------------------	---

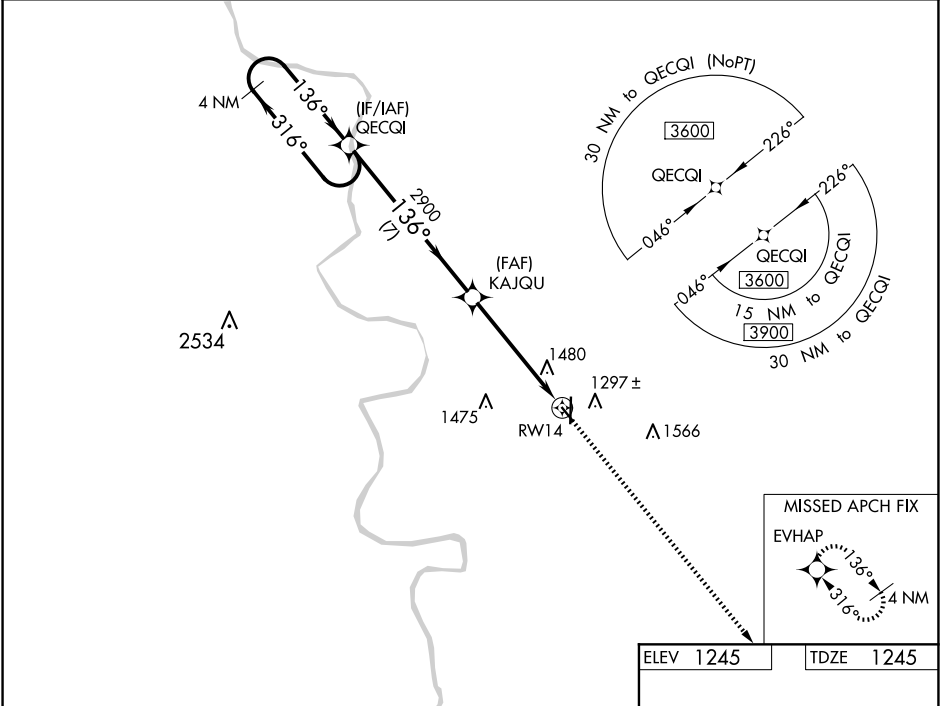
RNAV (GPS) RWY 14

COUNCIL BLUFFS MUNI (CBF)

⚠ For uncompensated Baro-VNAV systems, LNAV/VNAV NA below -18°C (0°F) or above 54°C (130°F). Rwy 14 helicopter visibility reduction below ¾ SM NA. DME/DME RNP-0.3 NA.

MISSED APPROACH: Climb to 3900 direct EVHAP and hold.

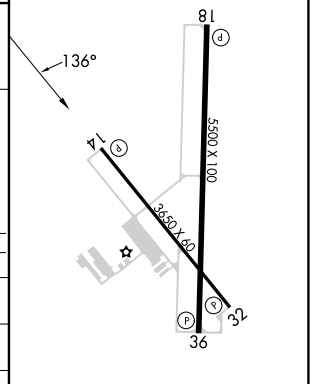
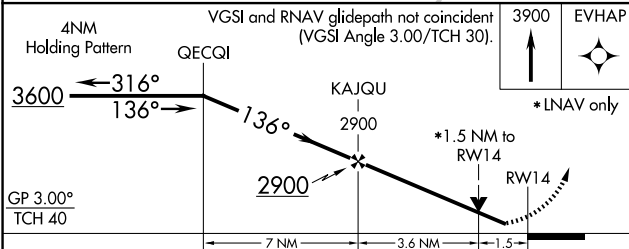
AWOS-3 126.575	OMAHA APP CON 124.5 263.0	CLNC DEL 127.675	UNICOM 122.725 (CTAF) 0
--------------------------	-------------------------------------	----------------------------	--



NC-3, 20 FEB 2025 to 20 MAR 2025

NC-3, 20 FEB 2025 to 20 MAR 2025

ELEV 1245	TDZE 1245
-----------	-----------



CATEGORY	A	B	C	D
LPV DA		1495-¾	250 (300-¾)	
LNAV/VNAV DA		1816-1⅝	571 (600-1⅝)	
LNAV MDA	1740-1	495 (500-1)	1740-1⅜	495 (500-1⅜)
C CIRCLING	1780-1	535 (600-1)	1780-1½	1880-2 635 (700-2)

MIRL Rwy 14-32 **0**
 HIRL Rwy 18-36 **0**
 REL Rws 14, 32, 18, and 36 **0**