

D-ATIS  
 132.65  
 WASHINGTON TOWER  
 119.1 257.6  
 134.35 (HELICOPTERS)  
 GND CON  
 121.7 257.6  
 CLNC DEL  
 128.25  
 CPDLC  
 PDC  
**D**

CAUTION: BE ALERT TO RUNWAY CROSSING CLEARANCES.  
 READBACK OF ALL RUNWAY HOLDING INSTRUCTIONS IS REQUIRED.

FIELD  
 ELEV  
 14

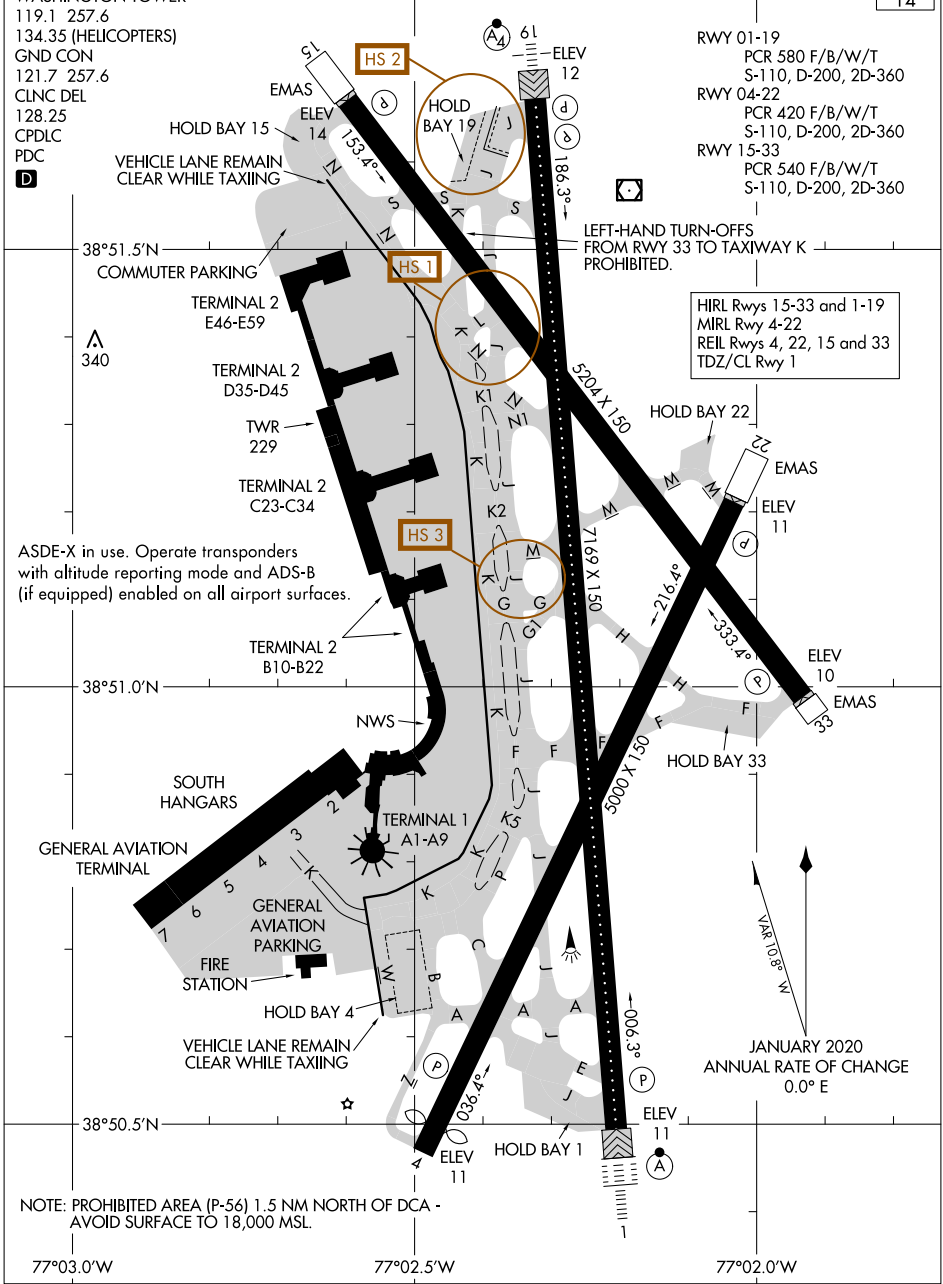
RWY 01-19  
 PCR 580 F/B/W/T  
 S-110, D-200, 2D-360  
 RWY 04-22  
 PCR 420 F/B/W/T  
 S-110, D-200, 2D-360  
 RWY 15-33  
 PCR 540 F/B/W/T  
 S-110, D-200, 2D-360

LEFT-HAND TURN-OFFS  
 FROM RWY 33 TO TAXIWAY K  
 PROHIBITED.

HIRL Rwy 15-33 and 1-19  
 MIRL Rwy 4-22  
 REIL Rwy 4, 22, 15 and 33  
 TDZ/CL Rwy 1

ASDE-X in use. Operate transponders  
 with altitude reporting mode and ADS-B  
 (if equipped) enabled on all airport surfaces.

NOTE: PROHIBITED AREA (P-56) 1.5 NM NORTH OF DCA -  
 AVOID SURFACE TO 18,000 MSL.



NE-3, 23 JAN 2025 to 20 FEB 2025

NE-3, 23 JAN 2025 to 20 FEB 2025