

KMCO

Orlando Intl
Orlando, FL

6.00 mi SE of city N28 25.7633' W81 18.5400' Mag Var: 06W

Nav aids:

Type:	ID:	Morse:	Frequency:	Radial:	Distance:
VORTAC	ORL	— — — —	112.2	169	7 nm
VOR/DME	MLB	— — — —	115.85	306	41 nm
VORTAC	LAL	— — — —	116.0	053	46 nm

Traffic Patterns:

No TPA reported. Assume 1,000 AGL.
Left: 18L,36R,18R,36L (Assumed Left: 17L,35R,17R,35L)

Runways:

Name:	Dimensions:	Material:	Condition:	Treatment:
17L/35R	9001X150	concrete	good	grooved
17R/35L	10000X150	concrete	good	grooved
18L/36R	12005X200	asphalt	good	grooved
18R/36L	12004X200	asphalt	good	grooved

Tower:

Tower Hrs: 24
Asde-X In Use. Operate Transponders With Altitude Reporting Mode And Ads-B (If Equipped)
Enabled On All Airport Surfaces.
Twprh# 407-852-7500.

Charts: NACO: Jacksonville Sectional

Fees: Facility, GPU, GPU, Handling, Infrastructure, International Trash, Lavatory, Overnight, Parking, Security

Fuel: 100LL Low-Lead, Jet A

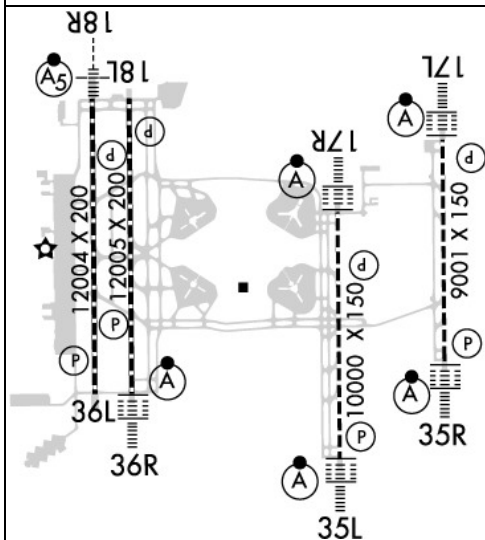
Phone: 407-825-7445

Weather: 407-855-5235 (ASOS)

Communication Freqs:

124.8 ALYNA STAR
123.85 App(S)
134.05 App(S)
148.8 AR OPS
41.5 AR OPS
128.375 BITHO STAR
119.4 CITRUS DP
119.4 CLASS B (061-180 4500 FT & BLW)
119.4 CLASS B (181-310 5500 FT & BLW)
120.15 CLASS B (181-359 ABV 5500 FT)
124.8 CLASS B (000-180 ABV 5500 FT)
135.3 CLASS B (311-060 5500 FT & BLW)
134.7 Clearance Delivery
120.525 D-ATIS (DEP)
121.25 D-ATIS (ARR)
124.8 DDANY DP
121.5 Emergency
124.8 FATHE DP
120.15 FSHUN DP

Elevation: 96 ft (29.3 m)



Communication Freqs:

124.8 App/Dep IC(000-180 ABV 5000 FT)
119.4 App/Dep(181-310 5500 FT & BLW)
120.15 App/Dep(181-359 ABV 5500 FT)
124.3 Tower(RWY 18L/36R, 18R/36L)
124.8 JEEMY DP(DEPARTING NORTH)
126.4 Ground Control(EAST)
124.8 ORL&O DP(EAST)
128.375 GTOUT STAR
128.375 RIDES STAR
134.05 GRNCH STAR
134.05 JOKRS STAR
134.05 MINEE STAR
120.15 OSPRY DP
124.8 MZULO DP
122.95 UNICOM
119.4 App/Dep(061-180 4500 FT & BLW)
135.3 App/Dep(311-060 5500 FT & BLW)
118.45 Tower(RWY 17L/35R, 17R/35L)
120.15 JEEMY DP(DEPARTING SOUTH)
121.8 Ground Control(WEST)
120.15 ORL&O DP(WEST)
128.375 GOOFY STAR
128.675 LEESE STAR
128.375 SNFLD STAR
134.05 JAFAR STAR
134.05 LEESE STAR
134.05 PRICY STAR
120.15 RDSOX DP
120.15 App/Dep
124.8 App/Dep

Notes:

Year-round, 7 Days a Week,All
Acft with Wingspan Greater Than 214 Ft Must Adhere to Specific Ry and Taxi Routes.
Contact Airfield Operations At 407-825-2036 for Details.
Avoid Contact with Taxiway Edge Lights; All Aircraft Determined to be FAA Design Group Iv and Above Must Perform Judgemental Oversteering Instead of Cockpit Centerline Steering When Taxiing.
Birds & Deer on & In vicinity of Arpt.
Bright Lgts on Road between Ry 17R/35L and Ry 17L/35R May be Mistaken for Ry Lgts.
Runway Status Lights are in Operation.
Ry 17L-35R Unlit 0400-1100Z.
Twy A, South of Twy A3 Rstd to Wingspan of Less Than 118 Ft. Prior Permission Required Required for Wingspan 118 Ft or Greater.
Twy J3 and Twy J4 Rstd to Wingspan of Less Than 118 Ft.
Unless Adv by Atis, Dep Flts on Initial CTC with Gnd Ctl: Acft on West Ramp, Airside 1 & 3 (Gates 1-59) Use Gnd Ctl 121.8. Acft At Airside 2 & 4 (Gates 60 and Higher), Use Gnd Ctl 126.4.
Use Caution in Vcnty of Twy "A" Along West Ramp.
West Ramp Customs Inspection Prkg Area Rstd to Acft Wingspan Less Than 118'
When Ori lls Ry 7 and Mco lls Rys 17 & 18R Simultaneous Operations are Conducted, Atc Radar Required.
Updtd Per 2021 Interim Alp.
Center 75 Foot Keel Section of Ry Concrete Full Length; Center 100 Foot Keel Section of Ry Concrete First 1000 Ft, Both Ends. Rest of Ry Width is Asphalt.
Center 87 Foot Keel Section of Ry Concrete Full Length; Rest of Ry Width is Asphalt. Last 3000 Ft of Ry 18R is Concrete Full Width.

FBO's Summary:

Atlantic Aviation

Location: W
Phone: 407-851-8304; Freq: ARINC: 130.900; Hours: 01/01-12/31, Mon-Sun, 00:00-00:00;

Signature Flight Support

Location: SW
Phone: 407-825-6999; Freq: ARINC: 130.375; Hours: 24/7



Other (Non-FBO) Businesses Summary:

SIMCOM Aviation Training - Lee Vista

Phone: 407-275-1050; Hours: 01/01-12/31, Mon-Fri, 08:00-17:00;

FlightSafety International

Phone: 321-281-3200; Hours: By Appointment

SIMCOM Aviation Training - Parksouth

Phone: 407-859-7373; Hours: 01/01-12/31, Mon-Fri, 08:00-17:00;

