

AOPA FLY-IN AT THE BUCKEYE AIR FAIR

(KBXK) Buckeye Municipal Airport / Buckeye, AZ

FEBRUARY 17, 18 & 19 2023

SPECIAL AIR TRAFFIC PROCEDURES

Special air traffic procedures to manage increased traffic, enhance safety, and minimize delays will be in effect each day from **7 AM to 7 PM**.

TEMPORARY VFR PROCEDURES

Specific procedures contained within this NOTAM may be revised at the time of the event. Pilots are urged to review all applicable NOTAMs and arrival/departure procedures prior to conducting a flight to Buckeye. Users are encouraged to check NOTAMs frequently to verify they possess the most current revisions. This NOTAM does not supersede restrictions pertaining to the use of airspace contained in FDC NOTAMS.

RUNWAY CLOSURE

Runway 17/35 will be closed during the published AIR SHOW times. Check NOTAMs for exact times.

- Friday, February 17, 11:30 a.m. – 1:00 p.m. & 4:30 p.m. - 6:45 p.m.
- Saturday, February 18, 2:30 p.m. - 5:00 p.m.
- Sunday, February 19, 1:30 p.m. - 4:00 p.m.

AIRPORT CLOSURE

****** The Airport will be closed from 7 PM to 7 AM Daily ******

PREFLIGHT PLANNING

Pilots are urged to review all applicable NOTAMs and arrival/departure procedures prior to conducting a flight to Buckeye Airport. IFR flight plans should be filed at least 6 hours prior to the proposed departure time.

BUCKEYE AIRPORT FREQUENCIES

THE ADVISORY TOWER WILL BE IN USE 8AM – 5PM on Friday, February 17th & 7 AM-6 PM Saturday the 18th and Sunday the 19th

Advisory Tower	127.8
CTAF/UNICOM	122.975
WX AWOS	119.625 (623-386-7627)

LOCAL TRAINING AND PRACTICE APPROACHES

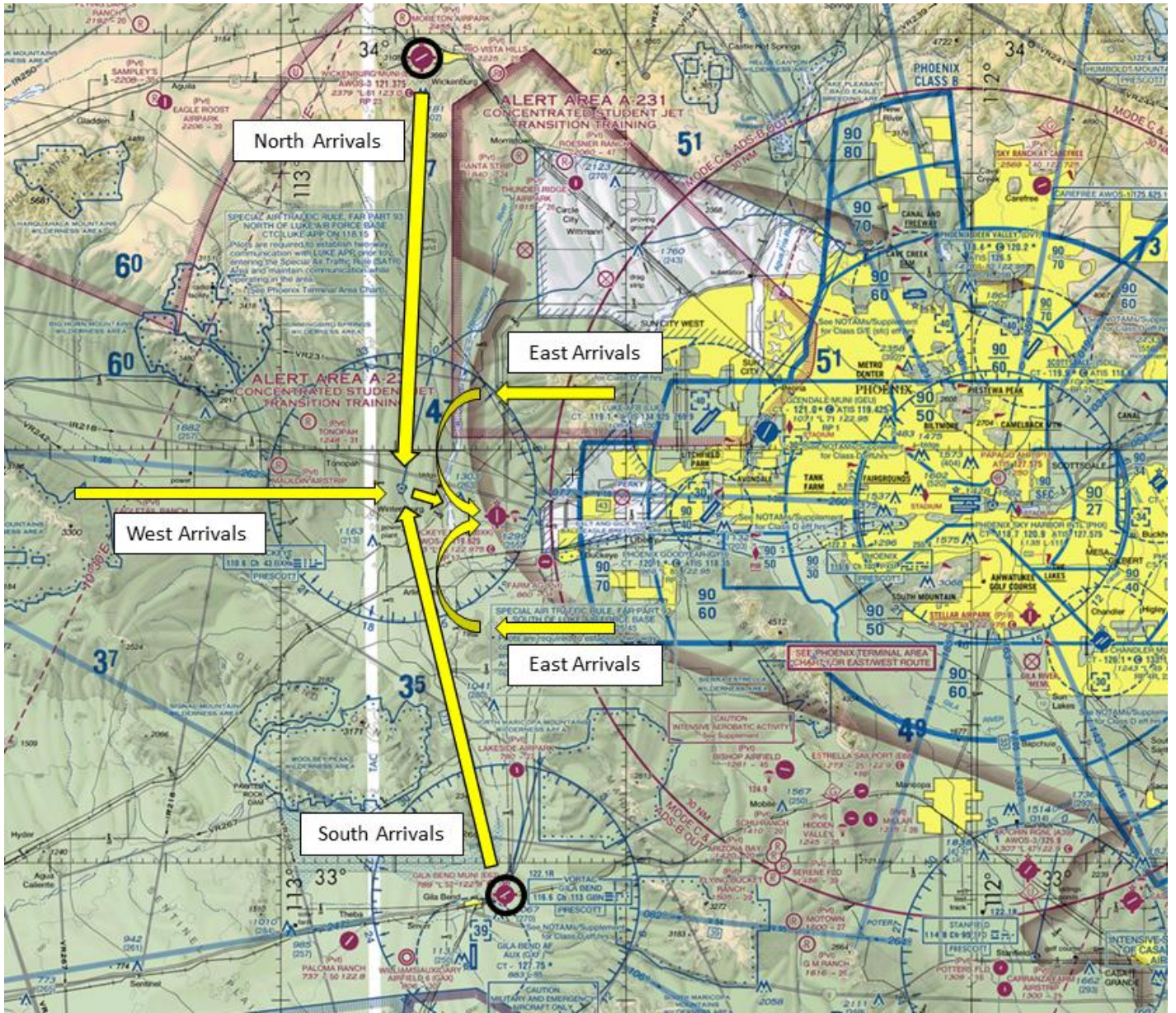
USE EXTREME CAUTION: SPECIAL AIR TRAFFIC RULE FAR PART 93 NORTH AND SOUTH OF LUKE AIR FORCE BASE. **CTC LUKE APP ON 118.15 (NORTH) AND 125.45 (SOUTH)**

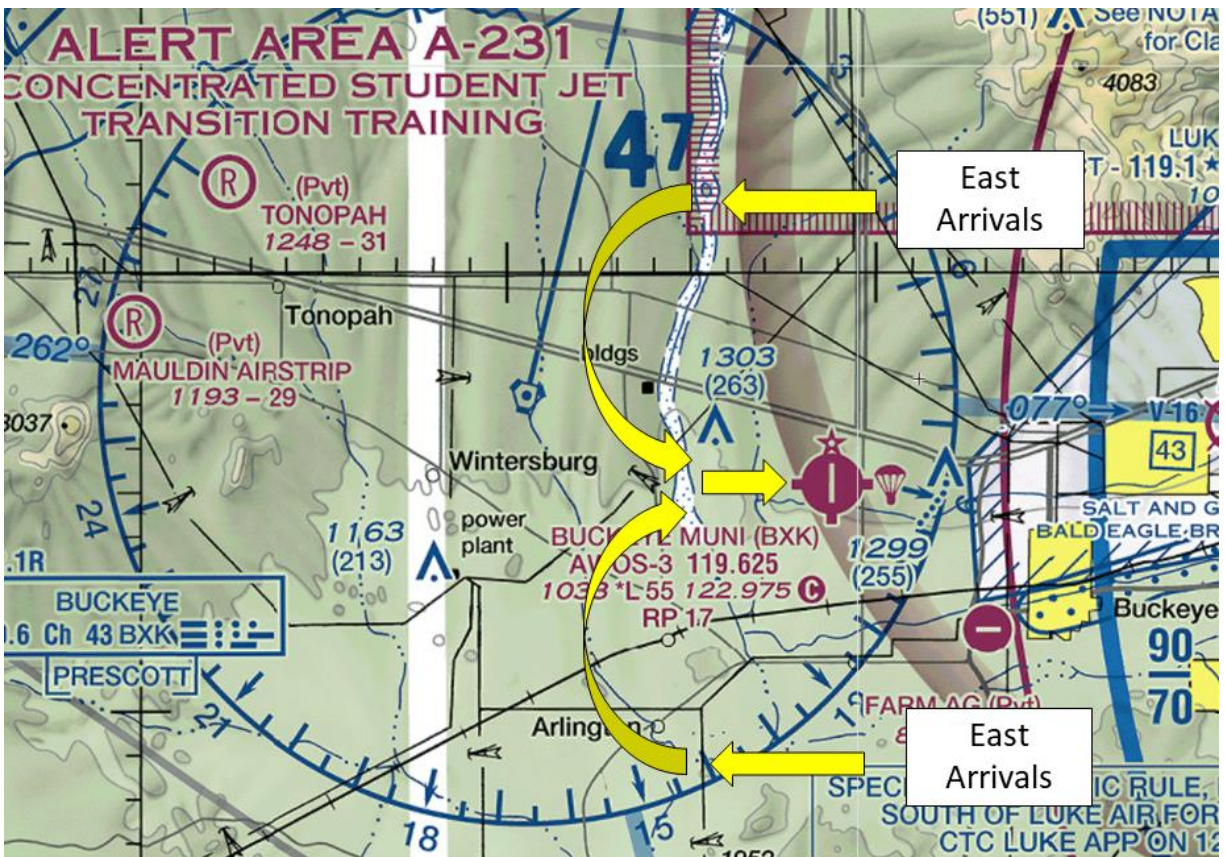
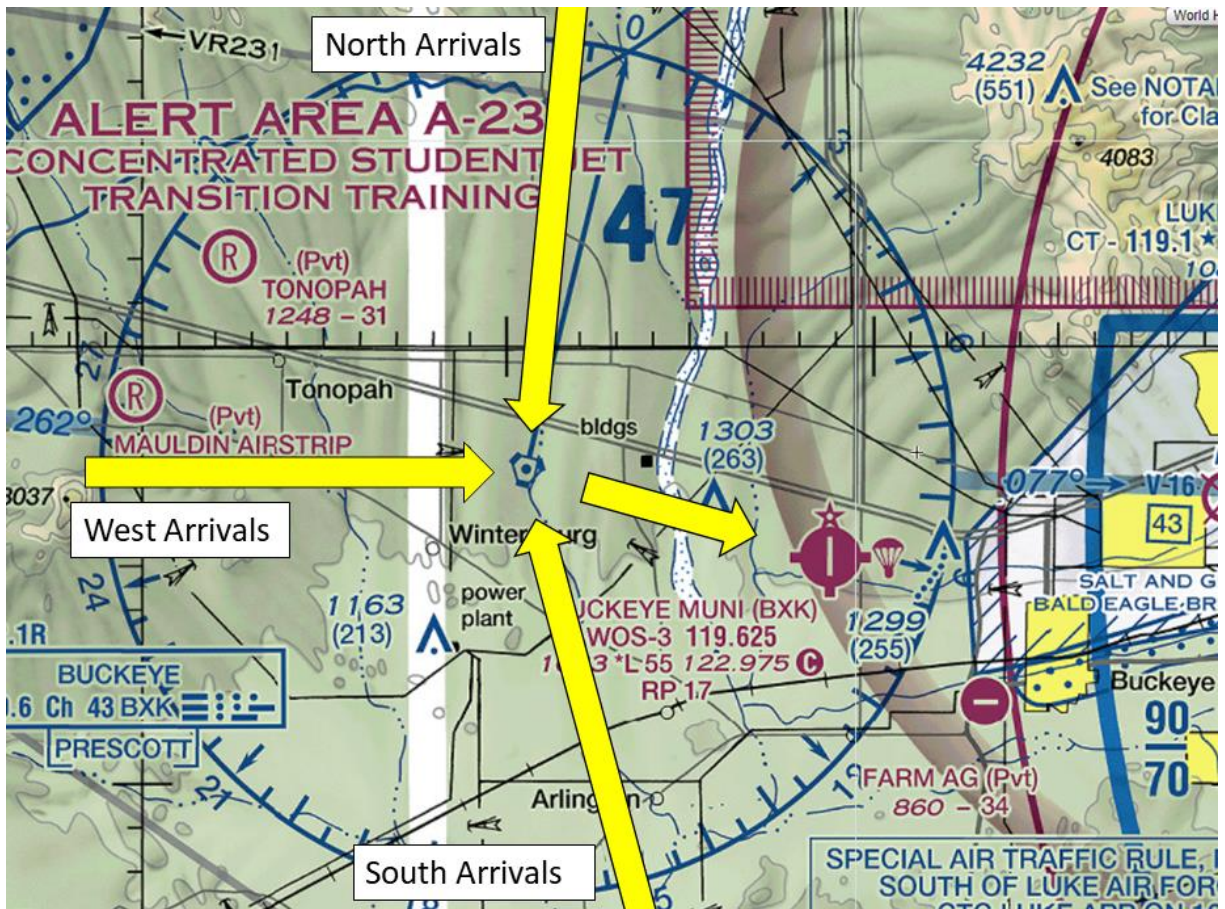
Pilots are required to establish two-way radio communication with LUKE APPROACH prior to entering the Special Air Traffic Rule (SATR) Area and maintain communication while operating in this area. (See Phoenix Terminal Area Chart)

Local traffic patterns will be closed to flight training and touch and goes will not be available during the times when the special air traffic procedures are in effect.

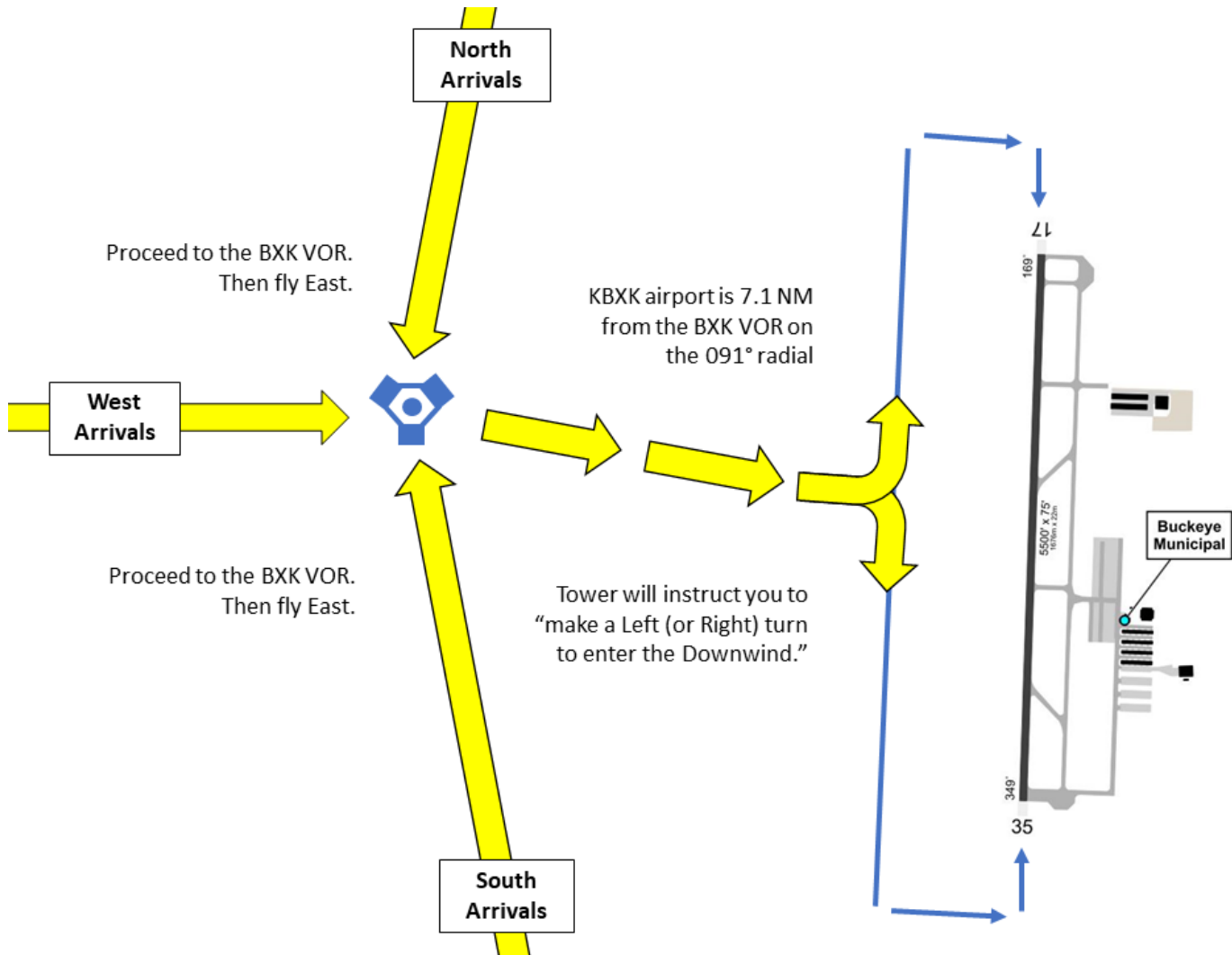
VFR ARRIVALS OVERVIEW

All aircraft are asked to maneuver toward the VOR and PLAN TO arrive at KBXK from the West. KBXK airport is 7.1 NM from the BXK VOR on the 091° radial. Plan to make a 90° entry to the downwind leg. The tower will instruct you to “make a Left (or Right) turn to enter the Downwind.”





VFR ARRIVALS FROM THE NORTH, SOUTH AND WEST



Arrivals from the North:

This arrival procedure begins over Wickenburg Airport (E25). Fly a course direct to the BXK VOR. Join the arrival anywhere along the route. Proceed south and plan to arrive over the Buckeye VOR at or below 3,500 feet MSL.

***** Caution: Stay alert for converging traffic. *****

After crossing the VOR turn East. Contact KBXK Advisory Tower on 127.8 when able. Plan to enter the downwind mid-field at a 90° angle you will be instructed to turn left or right to join the traffic pattern.

DO NOT ENTER THE BUCKEYE TRAFFIC PATTERN UNLESS CONTACT HAS BEEN ESTABLISHED WITH THE ADVISORY TOWER.

Arrivals from the South

This arrival procedure begins over Gila Bend Airport (E63). Join the arrival anywhere along the route. Proceed North and plan to arrive over the Buckeye VOR at or below 2,500 feet MSL.

Arrivals from the South (continued)

****** Caution: Stay alert for converging traffic. ******

After crossing the VOR turn East. Contact KBXK Advisory Tower on 127.8 when able. Plan to enter the downwind mid-field at a 90° angle you will be instructed to turn left or right to join the traffic pattern.

DO NOT ENTER THE BUCKEYE TRAFFIC PATTERN UNLESS CONTACT HAS BEEN ESTABLISHED WITH THE ADVISORY TOWER.

Arrivals from the West:

Fly a course Direct to the Buckeye (BXX) VOR. Proceed East and plan to arrive over the Buckeye VOR at or below 3,500 feet MSL. Contact Advisory tower frequency on 127.8 in the vicinity of the VOR.

****** Caution: Stay alert for converging traffic. ******

Plan to enter the downwind mid-field at a 90° angle you will be instructed to turn left or right to join the traffic pattern.

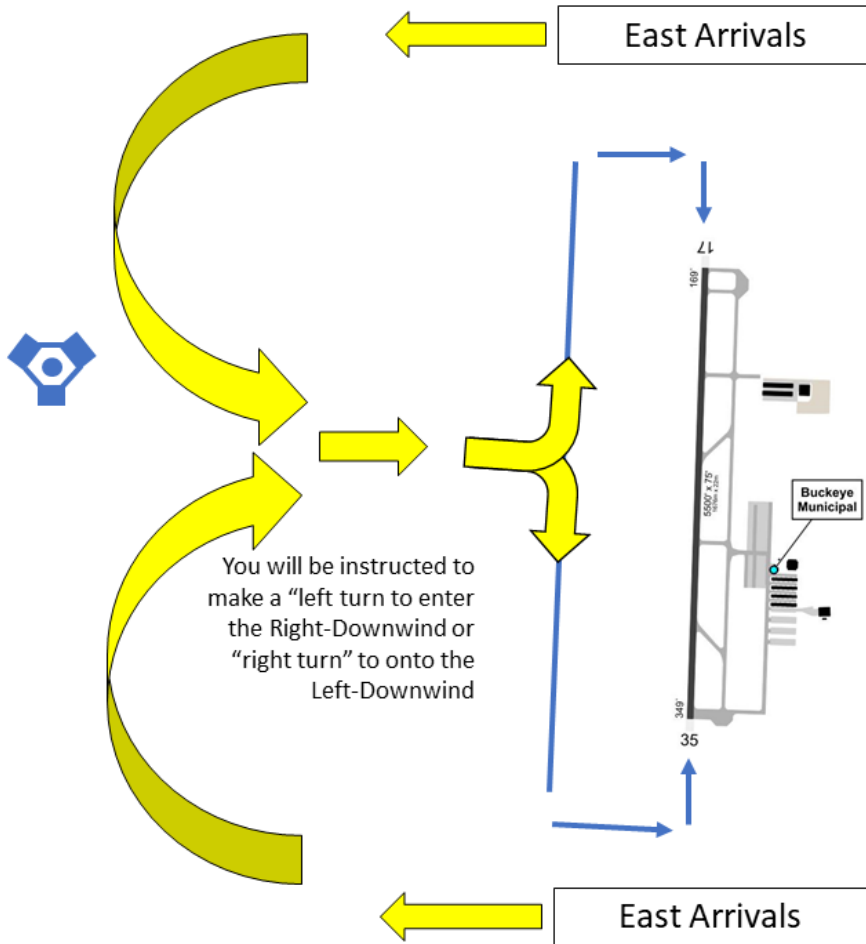
DO NOT ENTER THE BUCKEYE TRAFFIC PATTERN UNLESS CONTACT HAS BEEN ESTABLISHED WITH THE ADVISORY TOWER.

After Landing:

After landing, do not stop on the runway unless necessary. Exit the runway as quickly and as safely as possible at the first available taxiway. Continue far enough forward so as not to block subsequent arrivals.

Follow instructions from Buckeye Advisory Tower. Marshalls will guide aircraft to a parking space once you have arrived in the non-movement/aircraft parking area. If you are a vendor or camping have parking signage visible in the windscreen for marshalls (**C** for Camping). The advisory tower may also ask for parking requests.

VFR ARRIVALS FROM THE EAST



Arrivals from the East:

Circumnavigate the Buckeye Airport (KBXK) to the West. Contact Advisory tower frequency on 127.8 when able and advise your current position.

Plan to enter the downwind mid-field at a 90° angle you will be instructed to turn left or right to join the traffic pattern.

***** Caution: Stay alert for converging traffic. *****

DO NOT ENTER THE BUCKEYE TRAFFIC PATTERN UNLESS CONTACT HAS BEEN ESTABLISHED WITH THE ADVISORY TOWER.

After Landing:

After landing, do not stop on the runway unless necessary. Exit the runway as quickly and as safely as possible at the first available taxiway. Continue far enough forward so as not to block subsequent arrivals.

Follow instructions from Buckeye Advisory Tower. Marshalls will guide aircraft to a parking space once you have arrived in the non-movement/aircraft parking area. If you are a vendor or camping have parking signage visible in windscreen for marshalls (C for Camping). The advisory tower may also ask for parking request.

BUCKEYE AIRPORT GENERAL INFORMATION

PARKING AREAS

When operating in the parking areas, pilots are encouraged to be extra alert for taxiing aircraft, aircraft with the engine(s) running, and vehicle/pedestrian traffic. Marshalls will be assisting aircraft to and from parking areas and run-up areas. For safety reasons, high RPM engine running is prohibited in designated parking areas. For departure, it is recommended that pilots conduct their run-up procedures in queue if practical. Please review the parking map below prior to landing and departing.

VEHICULAR TRAFFIC

Vehicles are not allowed on ramps except those belonging to airport operators and tenants.

PARKING AND SERVICE DETAILS

Fuel/oil orders will be taken at the time your aircraft is parked. If you need either, please make sure to make the request at that time. Orders made later might delay your departure. Credit card information will be requested at the time the order is placed. Order slip will be attached to the propeller. If you are uncomfortable providing credit card information on the parking ramp, you can provide the information directly to the line service provider.

****Self-serve fueling will not be available during the event. Fuel will be dispensed from the truck at the Self-serve rate***

CHOCKS AND TIE DOWNS

Chocks and/or tie downs are required and not provided. Please bring your own.

CAMPING

Camping is allowed and encouraged. Pitch a tent under the wing of your aircraft and enjoy the weekend under the stars. See the [AOPA website](#) for more information. If you are camping at your aircraft, please print the large C provided in the camping material and place it in your windscreen so that marshalls can see it upon your arrival.

BUCKEYE AIRPORT DEPARTURE PROCEDURES

IFR DEPARTURES

All **IFR** departures should follow normal procedures and obtain their clearance through Clearance Delivery. Contact Phoenix Approach at **602-306-2565**.

AOPA Note: *Aircraft intending to depart IFR should consider requesting either a VFR climb or depart VFR and pick up an IFR clearance enroute if practical to avoid departure delays.*

VFR DEPARTURES

Prior to start-up -- Please ensure that you have reviewed the special flight information, departure procedures, and temporary taxi procedures prior to engine start. Check AWOS on **119.625**.

Engine Start/Run-up – If practical, it is recommended that you conduct your run-up while in queue for departure. Please consider propeller blast during your run-up.

Taxi – Follow instructions from marshalls and **MONITOR** CTAF on **122.975** & **Contact** the ADVISORY tower when number one for departure.

Departure – Pilots are likely to get instructions to fly the runway heading and proceed on course after 1000 feet.

DEPARTING WHEN ADVISORY TOWER IS UNAVAILABLE

Pilots should broadcast their location and intentions prior to any movement on the CTAF **122.975**

Stay alert while taxiing for aircraft parked on taxiways or other non-standard operations during the AOPA event.

BUCKEYE AIRPORT INFORMATION:

Traffic Pattern Altitude 976' AGL

Direction of traffic Right: 17 / Left: 35

Runway 5500' X 75' asphalt, good condition

Lighting MIRL Rwy 17/35

Fuel 100LL Low-Lead, Jet A1 / Phone: 623-349-6880

Weather 623-386-7627 (AWOS-3)

Clearance Delivery Luke Approach at 623-856-7361. If unable, Phoenix Approach at 602-306-2565.

Fuel City of Buckeye Phone: 623-349-6880

