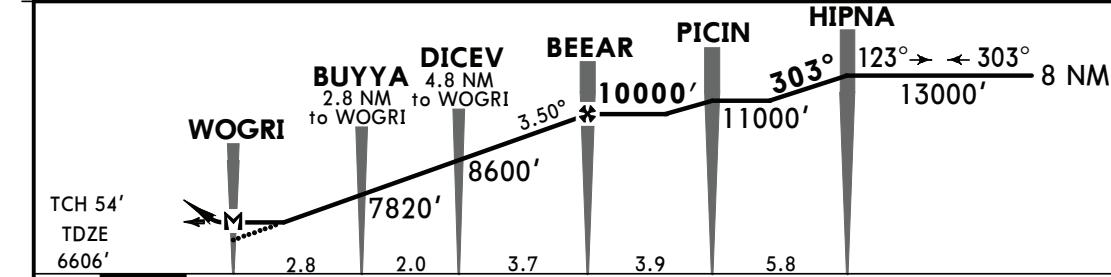
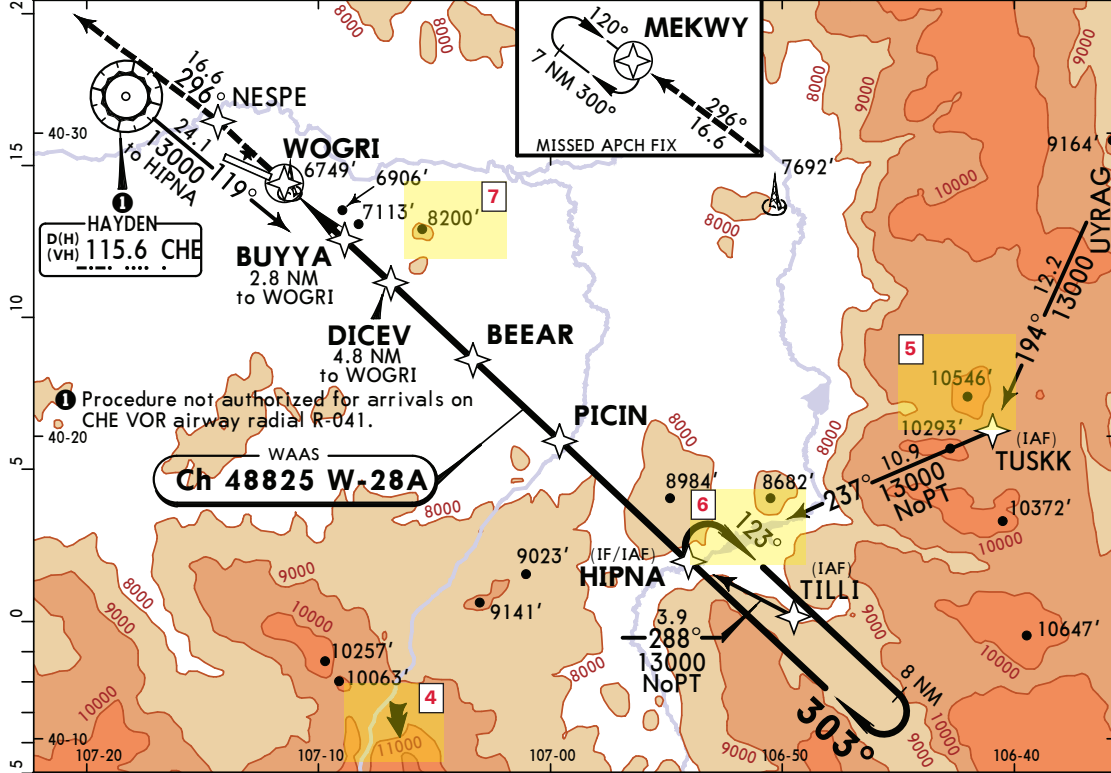


KHDN/HDN
YAMPA VALLEY

JEPPESEN
14 APR 23 (12-2) Eff 20 Apr

HAYDEN, COLO
RNAV (GPS) Rwy 28

AWOS-3PT 119.275		DENVER Center (R) 120.475		DENVER Radio 122.3		YAMPA VALLEY UNICOM CTAF 123.0	
WAAS Ch 48825 W-28A		Final Apch Crs 303°		BEEAR 10000' (3394')		LP MDA(H) (CONDITIONAL) 7000' (394')	
						Apt Elev 6606 TDZE 6606'	
MISSED APCH: Climb to 10,000' direct NESPE and on track 296° to MEKWHY and hold.							
RNP Apch		Alt Set: INCHES		Trans level: FL 180		Trans alt: 18000'	
1. Use local altimeter setting; if not received, use Craig-Moffat altimeter setting. 2. Final approach course offset 19.35°. 3. Rwy 28 helicopter visibility reduction below 3/4 SM not authorized. 4. Pilot controlled lighting 123.0.							



Gnd speed-Kts	70	90	100	120	140	160				
Descent Angle	3.50°	434	557	619	743	867	991	REIL	10000'	NESPE

TERPS	STRAIGHT-IN LANDING RWY 28				CIRCLE-TO-LAND	
	With Local Altimeter Setting MDA(H)	With Craig-Moffat Altimeter Setting MDA(H)	With Local Altimeter Setting MDA(H)	With Craig-Moffat Altimeter Setting MDA(H)	With Local Altimeter Setting MDA(H)	With Craig-Moffat Altimeter Setting MDA(H)
A	7000'(394')	7100'(494')	7080'(474')	7180'(574')	7220'(614')-1	7320'(714')-1
B	1	1	1	1	7660'(1054')-3	7760'(1154')-3
C	1 1/8	1 3/8	1 3/8	1 5/8	8180'(1574')-3	8280'(1674')-3
D						

CHANGES: Communications, chart format. © JEPPESEN, 2003, 2023. ALL RIGHTS RESERVED.