

LOC I-CAC 111.7	APP CRS 174°	Rwy Idg 6705
		TDZE 1530
		Apt Elev 1533

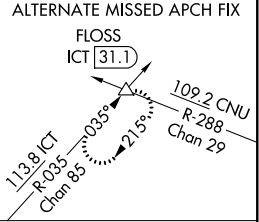
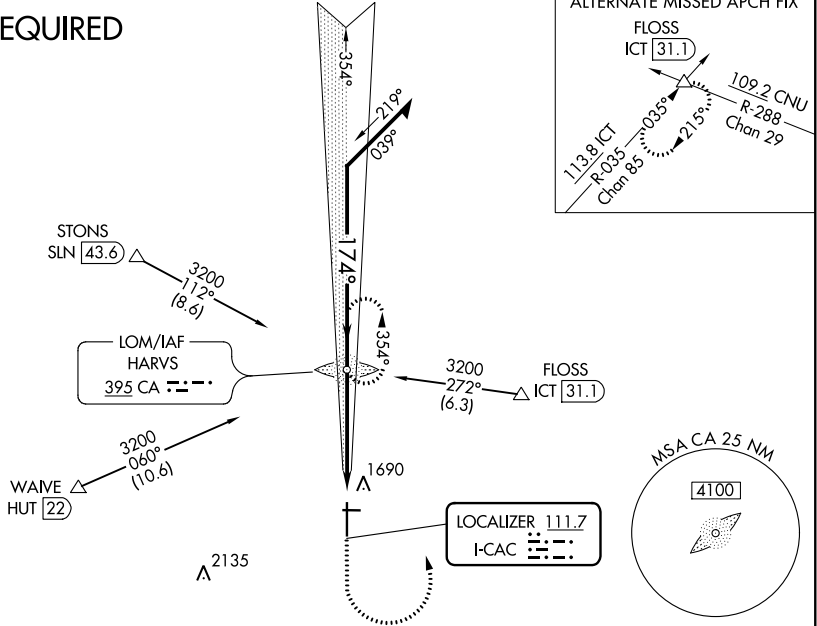
ILS or LOC RWY 17
NEWTON-CITY-COUNTY (E WK)

⚠ If local altimeter setting not received, use Wichita Dwight D Eisenhower National altimeter setting and increase DA to 1817/MDAs 100 feet. For inoperative MALSRS increase S-LOC 17 Cat D visibility to 1/4 mile. ADF required.

MALSRS **MISSED APPROACH:** Climb to 2500 then climbing left turn to 3200 direct HARVS LOM and hold.

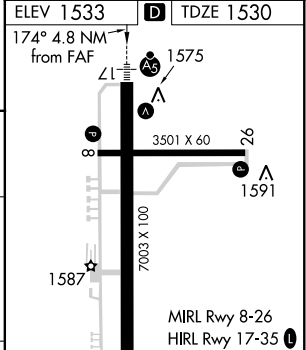
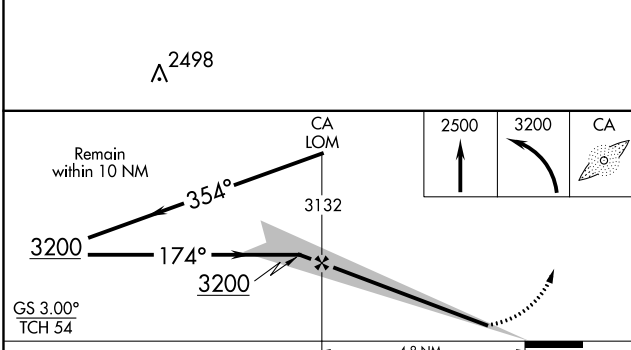
AWOS-3PT 123.875	WICHITA APP CON 125.5 306.2	CLNC DEL 126.55	UNICOM 123.0 (CTAF)
----------------------------	---------------------------------------	---------------------------	-------------------------------

ADF REQUIRED



NC-2, 26 APR 2018 to 24 MAY 2018

NC-2, 26 APR 2018 to 24 MAY 2018



CATEGORY	A	B	C	D
S-ILS 17	1730-1/2 200 (200-1/2)			
S-LOC 17	1900-1/2 370 (400-1/2)		1900-3/4 370 (400-3/4)	
CIRCLING	2000-1 467 (500-1)	2000-1/2 467 (500-1/2)		2100-2 567 (600-2)

Knots				
60	90	120	150	180
Min:Sec				
4:24	2:56	2:12	1:46	1:28