

LOC I-DRO 109.1	APP CRS 027°	Rwy Idg 9201
		TDZE 6643
		Apt Elev 6689

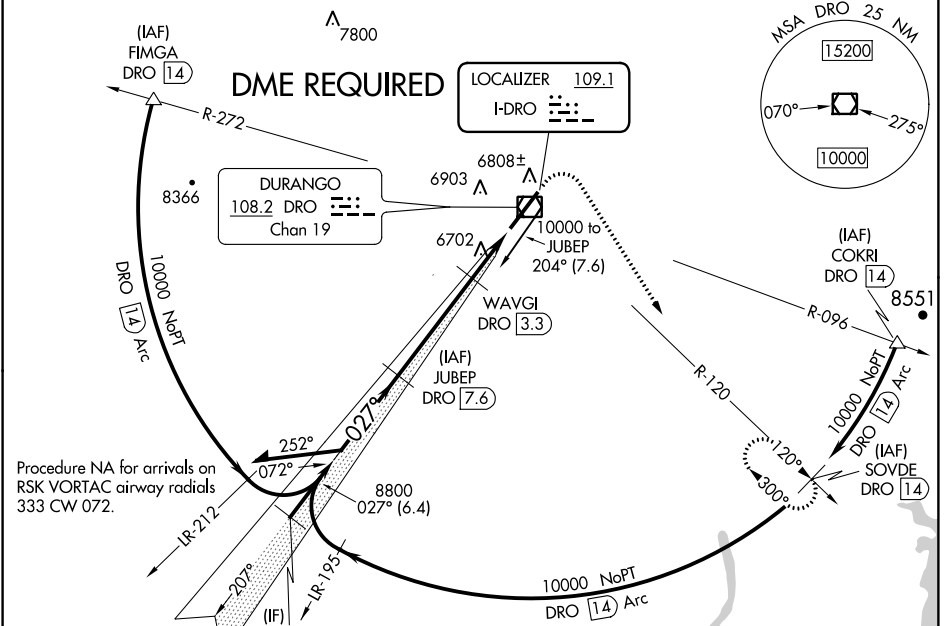
ILS or LOC/DME RWY 3

DURANGO-LA PLATA COUNTY (D.R.O)

NA DME required. DME from DRO VOR/DME. Simultaneous reception of I-DRO and DRO VOR/DME required. For info MALSRL, increase S-LOC 3 Cat C/D visibility to 7/10 mile.

MALSRL MISSED APPROACH: Climb to 7500 then climbing right turn to 10000 on heading 140° and on DRO VOR/DME R-120 to SOVDE/DRO 1.4 DME and hold.

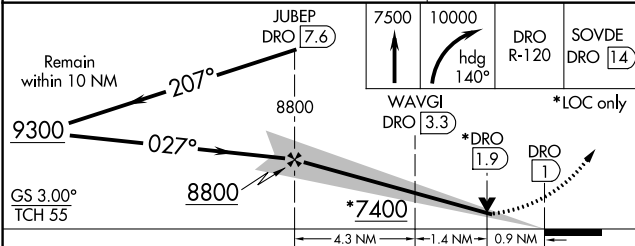
ASOS 120.625	DENVER CENTER 118.575 348.7	UNICOM 122.8 (CTAF) 0
------------------------	---------------------------------------	---------------------------------



SW-1, 26 APR 2018 to 24 MAY 2018

SW-1, 26 APR 2018 to 24 MAY 2018

ALT MISSED APCH FIX	ELEV 6689	TDZE 6643
252° R-072 RATTLESNAKE RSK 115.3 Chan 100		



CATEGORY	A	B	C	D
S-ILS 3		6843-1/2	200 (200-1/2)	
S-LOC 3		6960-1/2	317 (300-1/2)	
C CIRCLING	7160-1 471 (500-1)	7220-1 531 (600-1)	7540-2 1/2 851 (900-2 1/2)	8140-3 1451 (1500-3)

